



# INTERNATIONAL GEMOLOGICAL INSTITUTE

ELECTRONIC COPY



January 11, 2025

IGI Report Number 675518547

ROUND BRILLIANT

NATURAL DIAMOND

4.72 - 4.75 X 2.88 MM

Carat Weight 0.40 CARAT

Color Grade J

Clarity Grade VS 1

Cut Grade EXCELLENT

Polish EXCELLENT

Symmetry EXCELLENT

Fluorescence SLIGHT

Inscription(s) IGI 675518547

Comments: IDEAL CUT ROUND

BRILLIANT

## DIAMOND REPORT

January 11, 2025

IGI Report Number

675518547

Description

NATURAL DIAMOND

Shape and Cutting Style

ROUND BRILLIANT

Measurements

4.72 - 4.75 X 2.88 MM

## GRADING RESULTS

Carat Weight

0.40 CARAT

Color Grade

J

Clarity Grade

VS 1

Cut Grade

EXCELLENT

## ADDITIONAL GRADING INFORMATION

Polish

EXCELLENT

Symmetry

EXCELLENT

Fluorescence

SLIGHT

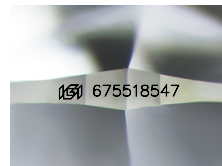
Identification Features

FEATHER

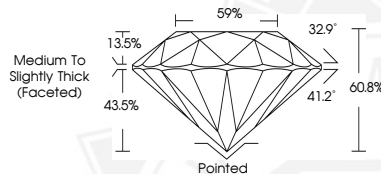
Inscription(s)

IGI 675518547

Comments: IDEAL CUT ROUND BRILLIANT



Sample Image Used



January 11, 2025

IGI Report Number 675518547

ROUND BRILLIANT

NATURAL DIAMOND

4.72 - 4.75 X 2.88 MM

Carat Weight 0.40 CARAT

Color Grade J

Clarity Grade VS 1

Cut Grade EXCELLENT

Polish EXCELLENT

Symmetry EXCELLENT

Fluorescence SLIGHT

Inscription(s) IGI 675518547

Comments: IDEAL CUT ROUND

BRILLIANT



THIS DOCUMENT WAS PRODUCED WITH THE FOLLOWING SECURITY MEASURES: SPECIAL DOCUMENT PAPER, INK SCREENS, WATERMARK, BACKGROUND DESIGNS, HOLOGRAM AND OTHER SECURITY FEATURES NOT LISTED AND DO EXCEED DOCUMENT SECURITY INDUSTRY GUIDELINES.

For terms & conditions and to verify this report, please visit [www.igi.org](http://www.igi.org)