



# INTERNATIONAL GEMOLOGICAL INSTITUTE

## DIAMOND REPORT

January 16, 2025  
IGI Report Number **675518801**  
Description **NATURAL DIAMOND**  
Shape and Cutting Style **ROUND BRILLIANT**  
Measurements **4.79 - 4.82 X 3.03 MM**

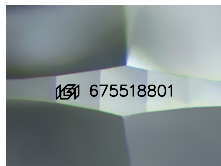
## GRADING RESULTS

Carat Weight **0.43 CARAT**  
Color Grade **H**  
Clarity Grade **SI 1**  
Cut Grade **EXCELLENT**

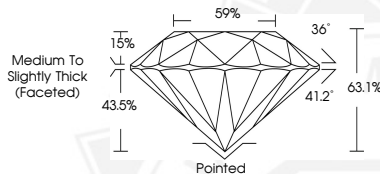
## ADDITIONAL GRADING INFORMATION

Polish **EXCELLENT**  
Symmetry **EXCELLENT**  
Fluorescence **NONE**  
Identification Features **CRYSTAL, FEATHER, CLOUD**  
Inscription(s) **IGI 675518801**

ELECTRONIC COPY



Sample Image Used



January 16, 2025  
IGI Report Number **675518801**  
**ROUND BRILLIANT**  
**NATURAL DIAMOND**  
**4.79 - 4.82 X 3.03 MM**  
Carat Weight **0.43 CARAT**  
Color Grade **H**  
Clarity Grade **SI 1**  
Cut Grade **EXCELLENT**  
Polish **EXCELLENT**  
Symmetry **EXCELLENT**  
Fluorescence **NONE**  
Inscription(s) **IGI 675518801**



January 16, 2025  
IGI Report Number **675518801**  
**ROUND BRILLIANT**  
**NATURAL DIAMOND**  
**4.79 - 4.82 X 3.03 MM**  
Carat Weight **0.43 CARAT**  
Color Grade **H**  
Clarity Grade **SI 1**  
Cut Grade **EXCELLENT**  
Polish **EXCELLENT**  
Symmetry **EXCELLENT**  
Fluorescence **NONE**  
Inscription(s) **IGI 675518801**



THIS DOCUMENT WAS PRODUCED WITH THE FOLLOWING SECURITY MEASURES: SPECIAL DOCUMENT PAPER, INK SCREENS, WATERMARK, BACKGROUND DESIGNS, HOLOGRAM AND OTHER SECURITY FEATURES NOT LISTED AND DO EXCEED DOCUMENT SECURITY INDUSTRY GUIDELINES.

For terms & conditions and to verify this report, please visit [www.igi.org](http://www.igi.org)