



# INTERNATIONAL GEMOLOGICAL INSTITUTE

## DIAMOND REPORT

January 27, 2025

IGI Report Number

675518931

Description

NATURAL DIAMOND

Shape and Cutting Style

ROUND BRILLIANT

Measurements

4.67 - 4.68 X 2.96 MM

### GRADING RESULTS

Carat Weight

0.40 CARAT

Color Grade

I

Clarity Grade

SI 2

Cut Grade

EXCELLENT

### ADDITIONAL GRADING INFORMATION

Polish

EXCELLENT

Symmetry

EXCELLENT

Fluorescence

NONE

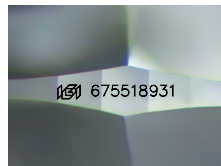
Identification Features

FEATHER, CRYSTAL CLOUD

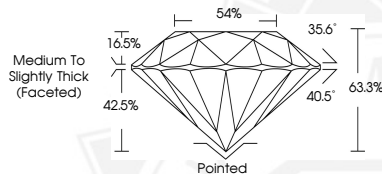
Inscription(s)

IGI 675518931

ELECTRONIC COPY



Sample Image Used



January 27, 2025

IGI Report Number 675518931

ROUND BRILLIANT

NATURAL DIAMOND

4.67 - 4.68 X 2.96 MM

Carat Weight 0.40 CARAT

Color Grade I

Clarity Grade SI 2

Cut Grade EXCELLENT

Polish EXCELLENT

Symmetry EXCELLENT

Fluorescence NONE

Inscription(s) IGI 675518931



January 27, 2025

IGI Report Number 675518931

ROUND BRILLIANT

NATURAL DIAMOND

4.67 - 4.68 X 2.96 MM

Carat Weight 0.40 CARAT

Color Grade I

Clarity Grade SI 2

Cut Grade EXCELLENT

Polish EXCELLENT

Symmetry EXCELLENT

Fluorescence NONE

Inscription(s) IGI 675518931



THIS DOCUMENT WAS PRODUCED WITH THE FOLLOWING SECURITY MEASURES: SPECIAL DOCUMENT PAPER, INK SCREENS, WATERMARK, BACKGROUND DESIGNS, HOLOGRAM AND OTHER SECURITY FEATURES NOT LISTED AND DO EXCEED DOCUMENT SECURITY INDUSTRY GUIDELINES.

For terms & conditions and to verify this report, please visit [www.igi.org](http://www.igi.org)