



# INTERNATIONAL GEMOLOGICAL INSTITUTE

## DIAMOND REPORT

February 4, 2025  
IGI Report Number **675519864**  
Description **NATURAL DIAMOND**  
Shape and Cutting Style **ROUND BRILLIANT**  
Measurements **4.29 - 4.32 X 2.73 MM**

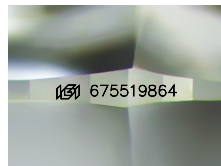
### GRADING RESULTS

Carat Weight **0.31 CARAT**  
Color Grade **G**  
Clarity Grade **SI 2**  
Cut Grade **EXCELLENT**

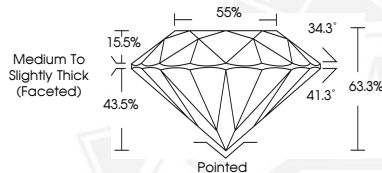
### ADDITIONAL GRADING INFORMATION

Polish **EXCELLENT**  
Symmetry **EXCELLENT**  
Fluorescence **VERY SLIGHT**  
Identification Features **CRYSTAL, FEATHER, CLOUD**  
Inscription(s) **(IGI) 675519864**

ELECTRONIC COPY



Sample Image Used



February 4, 2025  
IGI Report Number **675519864**  
ROUND BRILLIANT  
NATURAL DIAMOND  
4.29 - 4.32 X 2.73 MM  
Carat Weight **0.31 CARAT**  
Color Grade **G**  
Clarity Grade **SI 2**  
Cut Grade **EXCELLENT**  
Polish **EXCELLENT**  
Symmetry **EXCELLENT**  
Fluorescence **VERY SLIGHT**  
Inscription(s) **(IGI) 675519864**



February 4, 2025  
IGI Report Number **675519864**  
ROUND BRILLIANT  
NATURAL DIAMOND  
4.29 - 4.32 X 2.73 MM  
Carat Weight **0.31 CARAT**  
Color Grade **G**  
Clarity Grade **SI 2**  
Cut Grade **EXCELLENT**  
Polish **EXCELLENT**  
Symmetry **EXCELLENT**  
Fluorescence **VERY SLIGHT**  
Inscription(s) **(IGI) 675519864**



THIS DOCUMENT WAS PRODUCED WITH THE FOLLOWING SECURITY MEASURES: SPECIAL DOCUMENT PAPER, INK SCREENS, WATERMARK, BACKGROUND DESIGNS, HOLOGRAM AND OTHER SECURITY FEATURES NOT LISTED AND DO EXCEED DOCUMENT SECURITY INDUSTRY GUIDELINES.

For terms & conditions and to verify this report, please visit [www.igi.org](http://www.igi.org)