



INTERNATIONAL GEMOLOGICAL INSTITUTE

DIAMOND REPORT

February 8, 2025
IGI Report Number **675520215**
Description **NATURAL DIAMOND**
Shape and Cutting Style **ROUND BRILLIANT**
Measurements **5.42 - 5.43 X 3.40 MM**

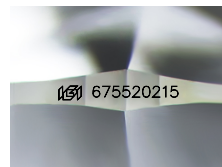
GRADING RESULTS

Carat Weight **0.61 CARAT**
Color Grade **K**
Clarity Grade **VVS 2**
Cut Grade **EXCELLENT**

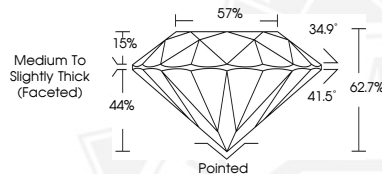
ADDITIONAL GRADING INFORMATION

Polish **EXCELLENT**
Symmetry **EXCELLENT**
Fluorescence **VERY SLIGHT**
Identification Features **FEATHER, PINPOINT, CHIP**
Inscription(s) **(IGI) 675520215**

ELECTRONIC COPY



Sample Image Used



February 8, 2025
IGI Report Number **675520215**
ROUND BRILLIANT
NATURAL DIAMOND
5.42 - 5.43 X 3.40 MM
Carat Weight **0.61 CARAT**
Color Grade **K**
Clarity Grade **VVS 2**
Cut Grade **EXCELLENT**
Polish **EXCELLENT**
Symmetry **EXCELLENT**
Fluorescence **VERY SLIGHT**
Inscription(s) **(IGI) 675520215**



February 8, 2025
IGI Report Number **675520215**
ROUND BRILLIANT
NATURAL DIAMOND
5.42 - 5.43 X 3.40 MM
Carat Weight **0.61 CARAT**
Color Grade **K**
Clarity Grade **VVS 2**
Cut Grade **EXCELLENT**
Polish **EXCELLENT**
Symmetry **EXCELLENT**
Fluorescence **VERY SLIGHT**
Inscription(s) **(IGI) 675520215**



THIS DOCUMENT WAS PRODUCED WITH THE FOLLOWING SECURITY MEASURES: SPECIAL DOCUMENT PAPER, INK SCREENS, WATERMARK, BACKGROUND DESIGN, HOLOGRAM AND OTHER SECURITY FEATURES NOT LISTED AND DO EXCEED DOCUMENT SECURITY INDUSTRY GUIDELINES.

For terms & conditions and to verify this report, please visit www.igi.org