



INTERNATIONAL GEMOLOGICAL INSTITUTE

DIAMOND REPORT

February 21, 2025
IGI Report Number **675520814**
Description **NATURAL DIAMOND**
Shape and Cutting Style **ROUND BRILLIANT**
Measurements **4.40 - 4.41 X 2.64 MM**

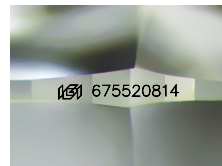
GRADING RESULTS

Carat Weight **0.31 CARAT**
Color Grade **F**
Clarity Grade **I 1**
Cut Grade **EXCELLENT**

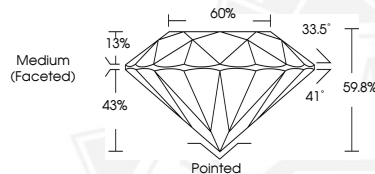
ADDITIONAL GRADING INFORMATION

Polish **EXCELLENT**
Symmetry **EXCELLENT**
Fluorescence **VERY SLIGHT**
Identification Features **FEATHER, CLOUD, CRYSTAL**
Inscription(s) **(IGI) 675520814**
Comments: IDEAL CUT ROUND BRILLIANT

ELECTRONIC COPY



Sample Image Used



February 21, 2025
IGI Report Number **675520814**
ROUND BRILLIANT
NATURAL DIAMOND
4.40 - 4.41 X 2.64 MM
Carat Weight **0.31 CARAT**
Color Grade **F**
Clarity Grade **I 1**
Cut Grade **EXCELLENT**
Polish **EXCELLENT**
Symmetry **EXCELLENT**
Fluorescence **VERY SLIGHT**
Inscription(s) **(IGI) 675520814**
Comments: IDEAL CUT ROUND BRILLIANT



February 21, 2025
IGI Report Number **675520814**
ROUND BRILLIANT
NATURAL DIAMOND
4.40 - 4.41 X 2.64 MM
Carat Weight **0.31 CARAT**
Color Grade **F**
Clarity Grade **I 1**
Cut Grade **EXCELLENT**
Polish **EXCELLENT**
Symmetry **EXCELLENT**
Fluorescence **VERY SLIGHT**
Inscription(s) **(IGI) 675520814**
Comments: IDEAL CUT ROUND BRILLIANT



THIS DOCUMENT WAS PRODUCED WITH THE FOLLOWING SECURITY MEASURES: SPECIAL DOCUMENT PAPER, INK SCREENS, WATERMARK, BACKGROUND DESIGN, HOLOGRAM AND OTHER SECURITY FEATURES NOT LISTED AND DO EXCEED DOCUMENT SECURITY INDUSTRY GUIDELINES.

For terms & conditions and to verify this report, please visit www.igi.org