



# INTERNATIONAL GEMOLOGICAL INSTITUTE

## DIAMOND REPORT

March 21, 2025  
IGI Report Number **675522802**  
Description **NATURAL DIAMOND**  
Shape and Cutting Style **ROUND BRILLIANT**  
Measurements **5.66 - 5.69 X 3.56 MM**

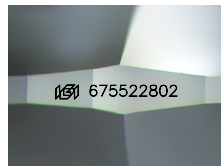
## GRADING RESULTS

Carat Weight **0.71 CARAT**  
Color Grade **H**  
Clarity Grade **SI 1**  
Cut Grade **EXCELLENT**

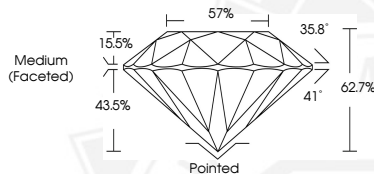
## ADDITIONAL GRADING INFORMATION

Polish **EXCELLENT**  
Symmetry **EXCELLENT**  
Fluorescence **SLIGHT**  
Identification Features **FEATHER, CRYSTAL**  
Inscription(s) **IGI 675522802**

ELECTRONIC COPY



Sample Image Used



March 21, 2025  
IGI Report Number **675522802**  
ROUND BRILLIANT  
NATURAL DIAMOND  
5.66 - 5.69 X 3.56 MM  
Carat Weight **0.71 CARAT**  
Color Grade **H**  
Clarity Grade **SI 1**  
Cut Grade **EXCELLENT**  
Polish **EXCELLENT**  
Symmetry **EXCELLENT**  
Fluorescence **SLIGHT**  
Inscription(s) **IGI 675522802**



March 21, 2025  
IGI Report Number **675522802**  
ROUND BRILLIANT  
NATURAL DIAMOND  
5.66 - 5.69 X 3.56 MM  
Carat Weight **0.71 CARAT**  
Color Grade **H**  
Clarity Grade **SI 1**  
Cut Grade **EXCELLENT**  
Polish **EXCELLENT**  
Symmetry **EXCELLENT**  
Fluorescence **SLIGHT**  
Inscription(s) **IGI 675522802**



THIS DOCUMENT WAS PRODUCED WITH THE FOLLOWING SECURITY MEASURES: SPECIAL DOCUMENT PAPER, INK SCREENS, WATERMARK, BACKGROUND DESIGNS, HOLOGRAM AND OTHER SECURITY FEATURES NOT LISTED AND DO EXCEED DOCUMENT SECURITY INDUSTRY GUIDELINES.

For terms & conditions and to verify this report, please visit [www.igi.org](http://www.igi.org)