



ELECTRONIC COPY

DIAMOND REPORT

January 21, 2025	
IGI Report Number	675551133
Description	NATURAL DIAMOND
Shape and Cutting Style	CUT CORNERED RECTANGULAR MODIFIED BRILLIANT
Measurements	7.31 X 4.85 X 3.37 MM

GRADING RESULTS

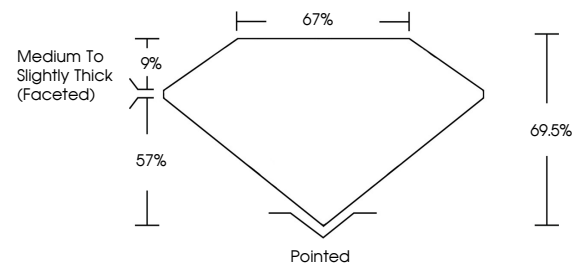
Carat Weight	1.01 CARAT
Color Grade	I
Clarity Grade	SI 2
Cut Grade	VERY GOOD

ADDITIONAL GRADING INFORMATION

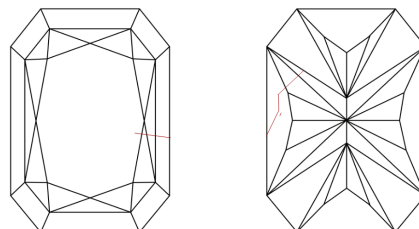
Polish	EXCELLENT
Symmetry	EXCELLENT
Fluorescence	NONE
Inscription(s)	151 675551133

675551133
Report verification at igi.org

PROPORTIONS

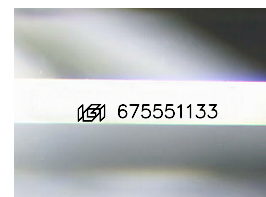


CLARITY CHARACTERISTICS



KEY TO SYMBOLS

Red symbols indicate internal characteristics.
Green symbols indicate external characteristics.



Sample Image Used

COLOR

D - F	G - J	K - M	N - R	S - Z	FANCY
Colorless	Near Colorless	Slightly Tinted	Very Light Color	Light Color	

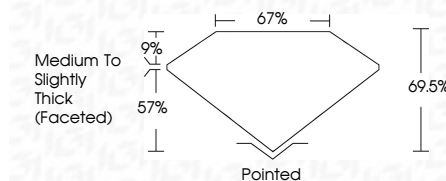
CLARITY

IF	VVS ¹⁻²	VS ¹⁻²	SI ¹⁻²	I ¹⁻³
Internally Flawless	Very Very Slightly Included	Very Slightly Included	Slightly Included	Included

DIAMOND REPORT



January 21, 2025	
IGI Report Number	675551133
Description	NATURAL DIAMOND
Shape and Cutting Style	CUT CORNERED RECTANGULAR MODIFIED BRILLIANT
Measurements	7.31 X 4.85 X 3.37 MM
GRADING RESULTS	
Carat Weight	1.01 CARAT
Color Grade	I
Clarity Grade	SI 2
Cut Grade	VERY GOOD



ADDITIONAL GRADING INFORMATION

Polish	EXCELLENT
Symmetry	EXCELLENT
Fluorescence	NONE
Inscription(s)	1561 675551133



© IGI 2020, International Gemological Institute

FD - 10 20



THIS DOCUMENT WAS PRODUCED WITH THE FOLLOWING SECURITY MEASURES: SPECIAL DOCUMENT PAPER, INK SCREENS, WATERMARK, BACKGROUND DESIGNS, HOLOGRAM AND OTHER SECURITY FEATURES NOT LISTED AND DO EXCEED DOCUMENT SECURITY INDUSTRY GUIDELINES

www.igi.org

January 21, 2025	1.01 CARAT
SI Report No. 675551193	S I 2
CU REPORTED RECI. MODIFIED BRILLIANT	VERY GOOD
CU REPORTED RECI. MODIFIED BRILLIANT	65.5%
CU REPORTED RECI. MODIFIED BRILLIANT	57%
CU REPORTED RECI. MODIFIED BRILLIANT	Medium to Slightly Thick Faceted
CU REPORTED RECI. MODIFIED BRILLIANT	Polished
CU REPORTED RECI. MODIFIED BRILLIANT	EXCELLENT
CU REPORTED RECI. MODIFIED BRILLIANT	EXCELLENT
CU REPORTED RECI. MODIFIED BRILLIANT	NONE
CU REPORTED RECI. MODIFIED BRILLIANT	None