



**ELECTRONIC COPY**

## DIAMOND REPORT

January 21, 2025	
IGI Report Number	675555029
Description	NATURAL DIAMOND
Shape and Cutting Style	SQUARE CUSHION MODIFIED BRILLIANT
Measurements	5.75 X 5.71 X 3.91 MM

## GRADING RESULTS

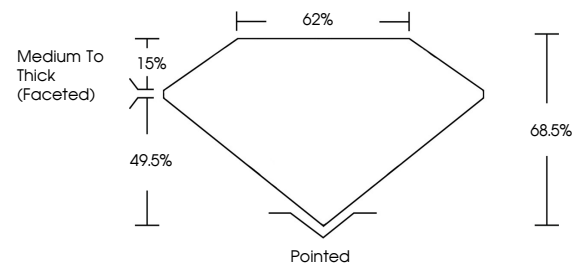
Carat Weight	1.10 CARAT
Color Grade	E
Clarity Grade	SI 2
Cut Grade	VERY GOOD

### ADDITIONAL GRADING INFORMATION

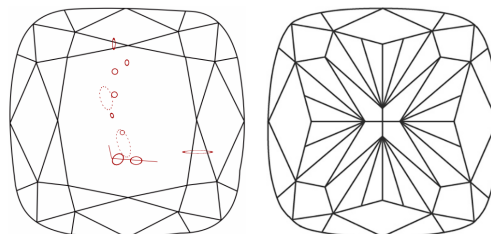
Polish	EXCELLENT
Symmetry	EXCELLENT
Fluorescence	NONE
Inscription(s)	131 675555029

675555029  
Report verification at [igi.org](http://igi.org)

## PROPORTIONS

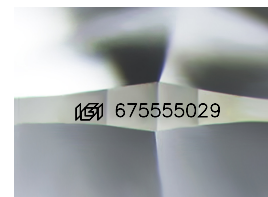


## CLARITY CHARACTERISTICS



## KEY TO SYMBOLS

Red symbols indicate internal characteristics.  
Green symbols indicate external characteristics.



Sample Image Used

## COLOR

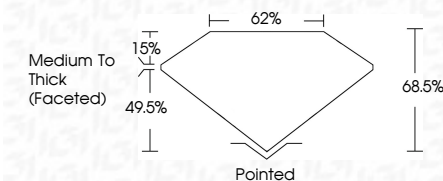
D - F	G - J	K - M	N - R	S - Z	FANCY
Colorless	Near Colorless	Slightly Tinted	Very Light Color	Light Color	

## CLARITY

IF	VVS <sup>1-2</sup>	VS <sup>1-2</sup>	SI <sup>1-2</sup>	I <sup>1-3</sup>
Internally Flawless	Very Very Slightly Included	Very Slightly Included	Slightly Included	Included



January 21, 2025	
IGI Report Number	675555029
Description	NATURAL DIAMOND
Shape and Cutting Style	SQUARE CUSHION MODIFIED BRILLIANT
Measurements	5.75 X 5.71 X 3.91 MM
GRADING RESULTS	
Carat Weight	1.10 CARAT
Color Grade	E
Clarity Grade	SI 2
Cut Grade	VERY GOOD



### ADDITIONAL GRADING INFORMATION

Polish	EXCELLENT
Symmetry	EXCELLENT
Fluorescence	NONE
Inscription(s)	(15) 675555029



© IGI 2020, International Gemological Institute

FD - 10 20

**www.igi.org**



THIS DOCUMENT WAS PRODUCED WITH THE FOLLOWING SECURITY MEASURES: SPECIAL DOCUMENT PAPER, INK SCREENS, WATERMARK, BACKGROUND DESIGNS, HOLOGRAM AND OTHER SECURITY FEATURES NOT LISTED AND DO EXCEED DOCUMENT SECURITY INDUSTRY GUIDELINES

January 21, 2025

January 21, 2025

IGI Report No 675555029

5.75 X 5.71 X 3.91 MM

Carat Weight  
1.10 CARAT

Color Grade	Color
Color Grade	Color

Quality Grade	SI 2
Very Good	
Cut Grade	

Depth	68.5%
Table	68%

Table	Weight
Girdle	Medium To Thick

(Faceted)

Culet	Pointed
Polish	EXCELLENT

Symmetry

Fluorescence	NONE
Inscription(s)	1591 675555029