



**ELECTRONIC COPY**

675587351  
Report verification at [igi.org](http://igi.org)



May 6, 2025

IGI Report Number **675587351**

Description **NATURAL DIAMOND**

Shape and Cutting Style **ROUND BRILLIANT**

Measurements **6.38 - 6.42 X 4.00 MM**

**GRADING RESULTS**

Carat Weight **1.00 CARAT**

Color Grade **F**

Clarity Grade **VS 1**

Cut Grade **EXCELLENT**

May 6, 2025

IGI Report Number **675587351**

Description **NATURAL DIAMOND**

Shape and Cutting Style **ROUND BRILLIANT**

Measurements **6.38 - 6.42 X 4.00 MM**

**GRADING RESULTS**

Carat Weight **1.00 CARAT**

Color Grade **F**

Clarity Grade **VS 1**

Cut Grade **EXCELLENT**

**ADDITIONAL GRADING INFORMATION**

Polish **EXCELLENT**

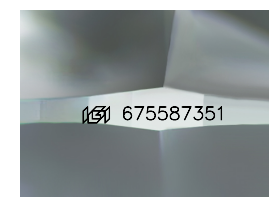
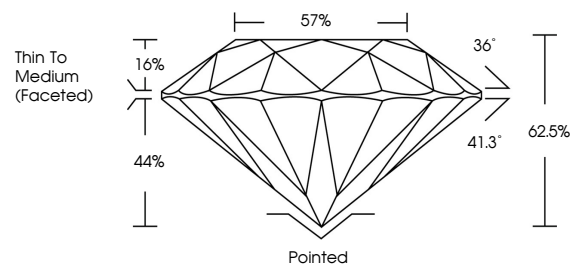
Symmetry **EXCELLENT**

Fluorescence **SLIGHT**

Inscription(s) **675587351**

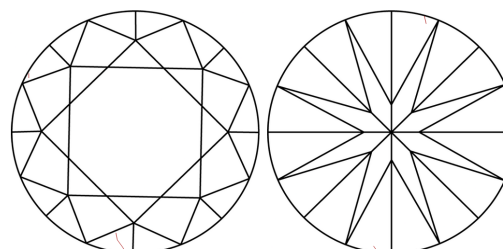
Comments: IDEAL CUT ROUND BRILLIANT

**PROPORTIONS**



Sample Image Used

**CLARITY CHARACTERISTICS**



**KEY TO SYMBOLS**

Red symbols indicate internal characteristics.  
Green symbols indicate external characteristics.

**COLOR**

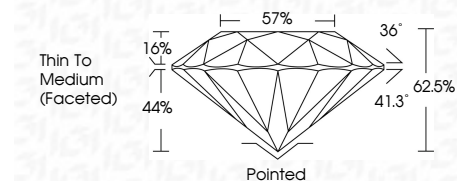
D - F      G - J      K - M      N - R      S - Z      FANCY

Colorless      Near Colorless      Slightly Tinted      Very Light Color      Light Color

**CLARITY**

IF      VS <sup>1-2</sup>      VS <sup>1-2</sup>      SI <sup>1-2</sup>      I <sup>1-3</sup>

Internally Flawless      Very Very Slightly Included      Very Slightly Included      Slightly Included      Included



**ADDITIONAL GRADING INFORMATION**

Polish **EXCELLENT**

Symmetry **EXCELLENT**

Fluorescence **SLIGHT**

Inscription(s) **675587351**

Comments: IDEAL CUT ROUND BRILLIANT



**IGI**



May 6, 2025  
IGI Report No. 675587351  
**ROUND BRILLIANT**

**6.38 - 6.42 X 4.00 MM**

1.00 CARAT  
F

Color Grade  
**EXCELLENT**

Clarity Grade  
**VS 1**

Depth  
62.5%

Table  
57%

Girdle  
Thin To Medium (Faceted)

Culet  
Pointed

Polish  
**EXCELLENT**

Symmetry  
**EXCELLENT**

Fluorescence  
**SLIGHT**

Inscription(s)  
 675587351

Comments:  
**IDEAL CUT ROUND BRILLIANT**