



INTERNATIONAL GEMOLOGICAL INSTITUTE

ELECTRONIC COPY

DIAMOND REPORT

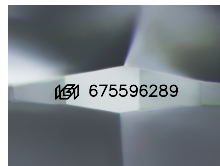
January 29, 2025
IGI Report Number **675596289**
Description **NATURAL DIAMOND**
Shape and Cutting Style **ROUND BRILLIANT**
Measurements **4.64 - 4.69 X 2.96 MM**

GRADING RESULTS

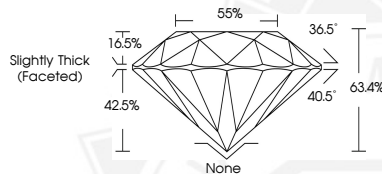
Carat Weight **0.40 CARAT**
Color Grade **I**
Clarity Grade **VVS 1**
Cut Grade **EXCELLENT**

ADDITIONAL GRADING INFORMATION

Polish **EXCELLENT**
Symmetry **EXCELLENT**
Fluorescence **NONE**
Identification Features **FEATHER**
Inscription(s) **(IGI) 675596289**



Sample Image Used



January 29, 2025
IGI Report Number **675596289**
ROUND BRILLIANT
NATURAL DIAMOND
4.64 - 4.69 X 2.96 MM
Carat Weight **0.40 CARAT**
Color Grade **I**
Clarity Grade **VVS 1**
Cut Grade **EXCELLENT**
Polish **EXCELLENT**
Symmetry **EXCELLENT**
Fluorescence **NONE**
Inscription(s) **(IGI) 675596289**



January 29, 2025
IGI Report Number **675596289**
ROUND BRILLIANT
NATURAL DIAMOND
4.64 - 4.69 X 2.96 MM
Carat Weight **0.40 CARAT**
Color Grade **I**
Clarity Grade **VVS 1**
Cut Grade **EXCELLENT**
Polish **EXCELLENT**
Symmetry **EXCELLENT**
Fluorescence **NONE**
Inscription(s) **(IGI) 675596289**



THIS DOCUMENT WAS PRODUCED WITH THE FOLLOWING SECURITY MEASURES: SPECIAL DOCUMENT PAPER, INK SCREENS, WATERMARK, BACKGROUND DESIGNS, HOLOGRAM AND OTHER SECURITY FEATURES NOT LISTED AND DO EXCEED DOCUMENT SECURITY INDUSTRY GUIDELINES.

For terms & conditions and to verify this report, please visit www.igi.org