



INTERNATIONAL GEMOLOGICAL INSTITUTE

DIAMOND REPORT

January 31, 2025
IGI Report Number **677554507**
Description **NATURAL DIAMOND**
Shape and Cutting Style **ROUND BRILLIANT**
Measurements **5.35 - 5.39 X 3.33 MM**

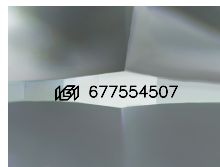
GRADING RESULTS

Carat Weight **0.60 CARAT**
Color Grade **K**
Clarity Grade **INTERNALLY FLAWLESS**
Cut Grade **EXCELLENT**

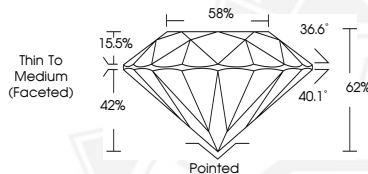
ADDITIONAL GRADING INFORMATION

Polish **EXCELLENT**
Symmetry **EXCELLENT**
Fluorescence **VERY SLIGHT**
Inscription(s) **IGI 677554507**

ELECTRONIC COPY



Sample Image Used



January 31, 2025
IGI Report Number **677554507**
ROUND BRILLIANT
NATURAL DIAMOND
5.35 - 5.39 X 3.33 MM
Carat Weight **0.60 CARAT**
Color Grade **K**
Clarity Grade **I.F.**
Cut Grade **EXCELLENT**
Polish **EXCELLENT**
Symmetry **EXCELLENT**
Fluorescence **VERY SLIGHT**
Inscription(s) **IGI 677554507**



January 31, 2025
IGI Report Number **677554507**
ROUND BRILLIANT
NATURAL DIAMOND
5.35 - 5.39 X 3.33 MM
Carat Weight **0.60 CARAT**
Color Grade **K**
Clarity Grade **I.F.**
Cut Grade **EXCELLENT**
Polish **EXCELLENT**
Symmetry **EXCELLENT**
Fluorescence **VERY SLIGHT**
Inscription(s) **IGI 677554507**



THIS DOCUMENT WAS PRODUCED WITH THE FOLLOWING SECURITY MEASURES: SPECIAL DOCUMENT PAPER, INK SCREENS, WATERMARK, BACKGROUND DESIGNS, HOLOGRAM AND OTHER SECURITY FEATURES NOT LISTED AND DO EXCEED DOCUMENT SECURITY INDUSTRY GUIDELINES.

For terms & conditions and to verify this report, please visit www.igi.org