



**ELECTRONIC COPY**

## DIAMOND REPORT

February 11, 2025	
IGI Report Number	677565449
Description	NATURAL DIAMOND
Shape and Cutting Style	ROUND BRILLIANT
Measurements	7.27 - 7.33 X 4.60 MM

## GRADING RESULTS

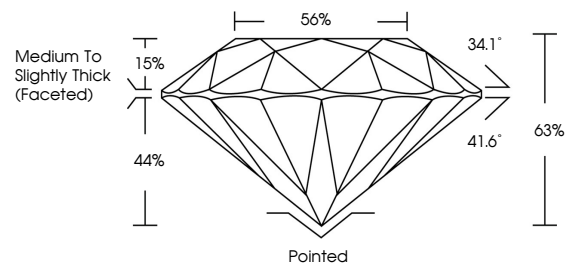
Carat Weight	1.50 CARAT
Color Grade	G
Clarity Grade	SI 2
Cut Grade	EXCELLENT

### ADDITIONAL GRADING INFORMATION

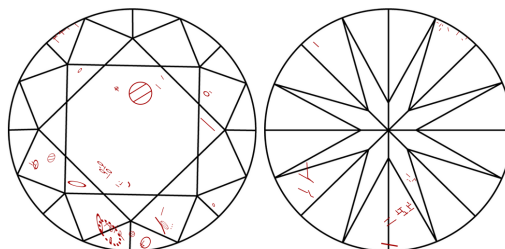
Polish	EXCELLENT
Symmetry	EXCELLENT
Fluorescence	VERY SLIGHT
Inscription(s)	131 677565449

677565449  
Report verification at [igi.org](http://igi.org)

## PROPORTIONS

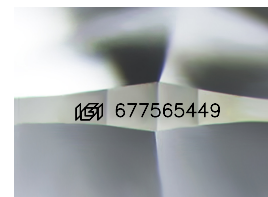


## CLARITY CHARACTERISTICS



### KEY TO SYMBOLS

Red symbols indicate internal characteristics.  
Green symbols indicate external characteristics.



Sample Image Used

**COLOR**

D - F	G - J	K - M	N - R	S - Z	FANCY
Colorless	Near Colorless	Slightly Tinted	Very Light Color	Light Color	

## CLARITY

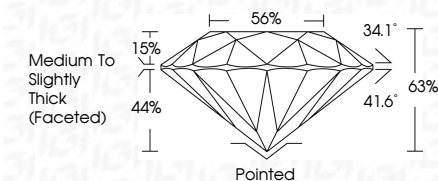
IF	VVS <sup>1-2</sup>	VS <sup>1-2</sup>	SI <sup>1-2</sup>	I <sup>1-3</sup>
Internally Flawless	Very Very Slightly Included	Very Slightly Included	Slightly Included	Included



February 11, 2025	
IGI Report Number	677565449
Description	NATURAL DIAMOND
Shape and Cutting Style	ROUND BRILLIANT
Measurements	7.27 - 7.33 X 4.60 MM

## GRADING RESULTS

Carat Weight	1.50 CARAT
Color Grade	G
Clarity Grade	S1 2
Cut Grade	EXCELLENT



### ADDITIONAL GRADING INFORMATION

Polish	EXCELLENT
Symmetry	EXCELLENT
Fluorescence	VERY SLIGHT
Inscription(s)	(6) 677565449



© IGI 2020, International Gemological Institute

FD - 10 20



THIS DOCUMENT WAS PRODUCED WITH THE FOLLOWING SECURITY MEASURES: SPECIAL DOCUMENT PAPER, INK SCREENS, WATERMARK, BACKGROUND DESIGNS, HOLOGRAM AND OTHER SECURITY FEATURES NOT LISTED AND DO EXCEED DOCUMENT SECURITY INDUSTRY GUIDELINES

**www.igi.org**

February 11, 2025  
IGI Report No 67756  
POIND BRILLIANT

1.27 - 1.33 X 4.60 MM	Carat Weight	1.60 CARAT
Color Grade	E	
Clarity Grade	S1	
Cut Grade	EXCELLENT	
Depth	65%	
Table	56%	
Grade	Medium to Slightly Thick (Faceted)	
Culet	Polished	
Polish	EXCELLENT	
Symmetry	EXCELLENT	
Fluorescence	VERY SLIGHT	
Inscriptions(s)	see 477545460	