



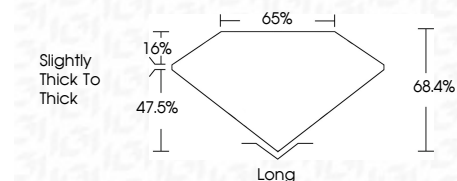
**ELECTRONIC COPY**

678518051  
Report verification at [igi.org](http://igi.org)



January 29, 2025  
IGI Report Number **678518051**  
Description **NATURAL DIAMOND**  
Shape and Cutting Style **EMERALD CUT**  
Measurements **8.74 X 6.20 X 4.24 MM**

**GRADING RESULTS**  
Carat Weight **2.32 CARATS**  
Color Grade **I**  
Clarity Grade **VS 1**  
Cut Grade **VERY GOOD**



**ADDITIONAL GRADING INFORMATION**  
Polish **EXCELLENT**  
Symmetry **EXCELLENT**  
Fluorescence **VERY SLIGHT**  
Inscription(s) **IGI 678518051**



January 29, 2025  
IGI Report No 678518051  
**EMERALD CUT**  
8.74 X 6.20 X 4.24 MM  
2.32 CARATS  
I  
Color Grade  
VS 1  
VERY GOOD  
Depth 68.4%  
Table 16%  
Slightly thick to thick  
Long  
EXCELLENT  
EXCELLENT  
VERY SLIGHT  
IGI 678518051

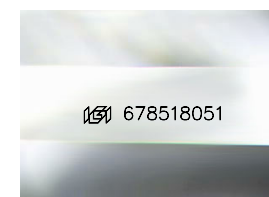
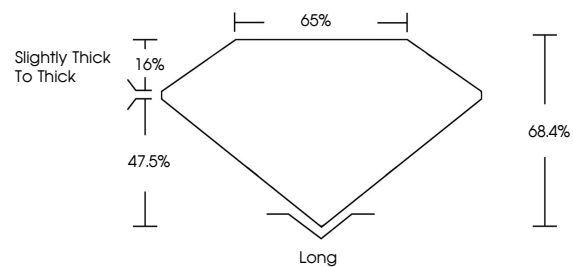
**DIAMOND REPORT**

January 29, 2025  
IGI Report Number **678518051**  
Description **NATURAL DIAMOND**  
Shape and Cutting Style **EMERALD CUT**  
Measurements **8.74 X 6.20 X 4.24 MM**

**GRADING RESULTS**  
Carat Weight **2.32 CARATS**  
Color Grade **I**  
Clarity Grade **VS 1**  
Cut Grade **VERY GOOD**

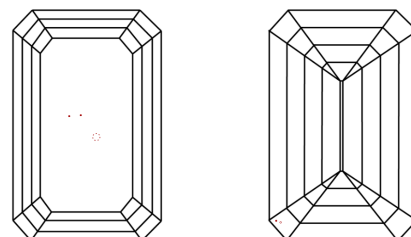
**ADDITIONAL GRADING INFORMATION**  
Polish **EXCELLENT**  
Symmetry **EXCELLENT**  
Fluorescence **VERY SLIGHT**  
Inscription(s) **IGI 678518051**

**PROPORTIONS**



Sample Image Used

**CLARITY CHARACTERISTICS**



**KEY TO SYMBOLS**

Red symbols indicate internal characteristics.  
Green symbols indicate external characteristics.

**COLOR**

D - F	G - J	K - M	N - R	S - Z	FANCY
Colorless	Near Colorless	Slightly Tinted	Very Light Color	Light Color	

**CLARITY**

IF	VVS <sup>1-2</sup>	VS <sup>1-2</sup>	SI <sup>1-2</sup>	I <sup>1-3</sup>
Internally Flawless	Very Very Slightly Included	Very Slightly Included	Slightly Included	Included

