



ELECTRONIC COPY

DIAMOND REPORT

February 13, 2025	
IGI Report Number	678538344
Description	NATURAL DIAMOND
Shape and Cutting Style	ROUND BRILLIANT
Measurements	9.18 - 9.24 X 5.79 MM

GRADING RESULTS

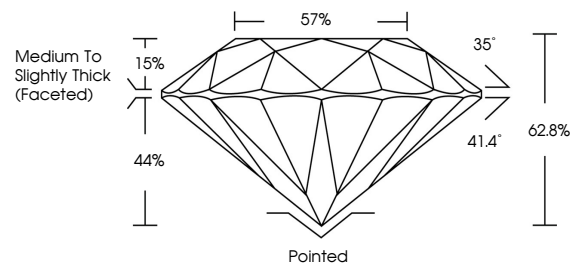
Carat Weight	3.01 CARATS
Color Grade	J
Clarity Grade	VVS 2
Cut Grade	EXCELLENT

ADDITIONAL GRADING INFORMATION

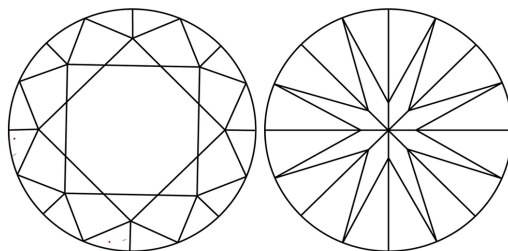
Polish	EXCELLENT
Symmetry	EXCELLENT
Fluorescence	NONE
Inscription(s)	131 678538344

678538344
Report verification at igi.org

PROPORTIONS

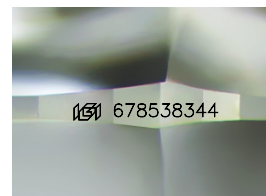


CLARITY CHARACTERISTICS



KEY TO SYMBOLS

Red symbols indicate internal characteristics.
Green symbols indicate external characteristics.



Sample Image Used

COLOR

D - F	G - J	K - M	N - R	S - Z	FANCY
Colorless	Near Colorless	Slightly Tinted	Very Light Color	Light Color	

CLARITY

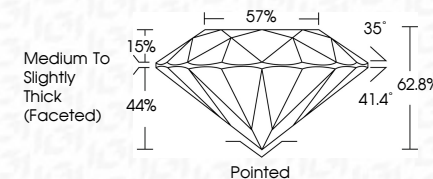
IF	VVS ¹⁻²	VS ¹⁻²	SI ¹⁻²	I ¹⁻³
Internally Flawless	Very Very Slightly Included	Very Slightly Included	Slightly Included	Included



February 13, 2025	
IGI Report Number	678538344
Description	NATURAL DIAMOND
Shape and Cutting Style	ROUND BRILLIANT
Measurements	9.18 - 9.24 X 5.79 MM

GRADING RESULTS

Carat Weight	3.01 CARATS
Color Grade	J
Clarity Grade	VVS 2
Cut Grade	EXCELLENT



ADDITIONAL GRADING INFORMATION

Polish	EXCELLENT
Symmetry	EXCELLENT
Fluorescence	NONE
Inscription(s)	(15) 678538344



© IGI 2020, International Gemological Institute

FD - 10 20



THIS DOCUMENT WAS PRODUCED WITH THE FOLLOWING SECURITY MEASURES: SPECIAL DOCUMENT PAPER, INK SCREENS, WATERMARK, BACKGROUND DESIGNS, HOLOGRAM AND OTHER SECURITY FEATURES NOT LISTED AND DO EXCEED DOCUMENT SECURITY INDUSTRY GUIDELINES

www.igi.org

February 13, 2025
IGI Report No 67853
ROUND BRILLIANT

9.18 - 9.24 X 5.79 MM
Carat Weight 3.01 CARATS

9.18 - 9.24 X 5.79 MM	3.01 CARATS
Carat Weight	
Color Grade	

Color Grade	WS 2	EXCELLENT
Clarity Grade		
Cut Grade		

Cut Grade	EXCELLENT
Depth	62.8%
Table	57%

	57%
Table	
Circle	

	Culet	Pointed	Excellent
Ink (rubbed)			

Polish	EXCELLENT
Symmetry	EXCELLENT
Fluorescence	NONE

Fluorescence	NONE
Inscription(s)	157 678538344