



**ELECTRONIC COPY**

## DIAMOND REPORT

February 7, 2025	
IGI Report Number	678538509
Description	NATURAL DIAMOND
Shape and Cutting Style	ROUND BRILLIANT
Measurements	7.52 - 7.57 X 4.80 MM

## GRADING RESULTS

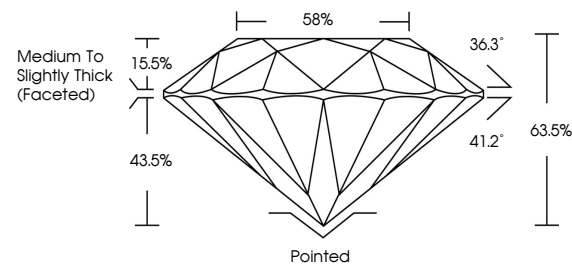
Carat Weight	1.73 CARAT
Color Grade	J
Clarity Grade	SI 1
Cut Grade	EXCELLENT

### ADDITIONAL GRADING INFORMATION

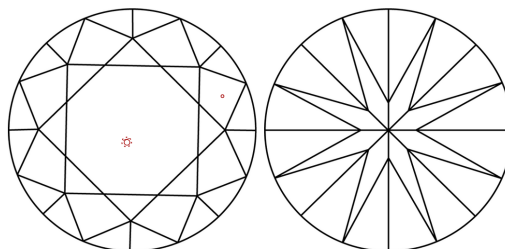
Polish	EXCELLENT
Symmetry	EXCELLENT
Fluorescence	VERY SLIGHT
Inscription(s)	131 678538509

678538509  
Report verification at [igi.org](http://igi.org)

## PROPORTIONS

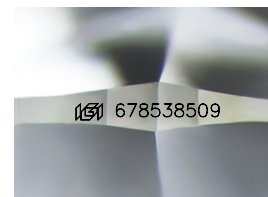


## CLARITY CHARACTERISTICS



## KEY TO SYMBOLS

Red symbols indicate internal characteristics.  
Green symbols indicate external characteristics.



Sample Image Used

**COLOR**

D - F	G - J	K - M	N - R	S - Z	FANCY
Colorless	Near Colorless	Slightly Tinted	Very Light Color	Light Color	

## CLARITY

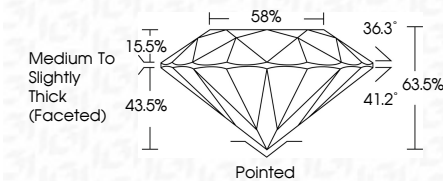
IF	VVS <sup>1-2</sup>	VS <sup>1-2</sup>	SI <sup>1-2</sup>	I <sup>1-3</sup>
Internally Flawless	Very Very Slightly Included	Very Slightly Included	Slightly Included	Included



February 7, 2025	
IGI Report Number	678538509
Description	NATURAL DIAMOND
Shape and Cutting Style	ROUND BRILLIANT
Measurements	7.52 - 7.57 X 4.80 MM

## GRADING RESULTS

Carat Weight	1.73 CARAT
Color Grade	J
Clarity Grade	SI 1
Cut Grade	EXCELLENT



### ADDITIONAL GRADING INFORMATION

Polish	EXCELLENT
Symmetry	EXCELLENT
Fluorescence	VERY SLIGHT
Inscription(s)	(6) 678538509



© IGI 2020, International Gemological Institute

FD - 10 20

**www.igi.org**



THIS DOCUMENT WAS PRODUCED WITH THE FOLLOWING SECURITY MEASURES: SPECIAL DOCUMENT PAPER, INK SCREENS, WATERMARK, BACKGROUND DESIGNS, HOLOGRAM AND OTHER SECURITY FEATURES NOT LISTED AND DO EXCEED DOCUMENT SECURITY INDUSTRY GUIDELINE

February 7, 2025  
IGI Report No 678538509  
ROUND BRILLIANT

1.75 - 1.75 X 4.80 MM	1.75 CARAT
Carat Weight	EXCELLENT
Color Grade	63.5%
Clarity Grade	59%
Cut Grade	Medium to Slightly Thick (Faceted)
Depth	Polished
Table	EXCELLENT
Grade	EXCELLENT
	VERY SLIGHT
	Fluorescence
	Symmetry
	Polish
	Culet
	Inscription(s)
	see 476839570