



# INTERNATIONAL GEMOLOGICAL INSTITUTE

ELECTRONIC COPY

## DIAMOND REPORT

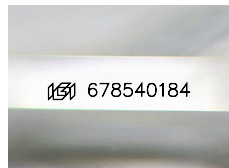
May 8, 2025  
IGI Report Number **678540184**  
Description **NATURAL DIAMOND**  
Shape and Cutting Style **PRINCESS CUT**  
Measurements **4.88 X 4.79 X 3.55 MM**

### GRADING RESULTS

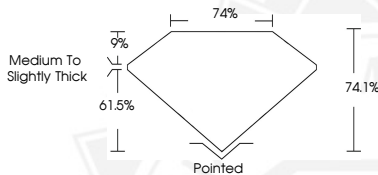
Carat Weight **0.70 CARAT**  
Color Grade **I**  
Clarity Grade **VVS 2**  
Cut Grade **VERY GOOD**

### ADDITIONAL GRADING INFORMATION

Polish **EXCELLENT**  
Symmetry **EXCELLENT**  
Fluorescence **NONE**  
Identification Features **FEATHER**  
Inscription(s) **(IGI) 678540184**



Sample Image Used



May 8, 2025  
IGI Report Number **678540184**  
**PRINCESS CUT**  
**NATURAL DIAMOND**  
**4.88 X 4.79 X 3.55 MM**  
Carat Weight **0.70 CARAT**  
Color Grade **I**  
Clarity Grade **VVS 2**  
Cut Grade **VERY GOOD**  
Polish **EXCELLENT**  
Symmetry **EXCELLENT**  
Fluorescence **NONE**  
Inscription(s) **(IGI) 678540184**



May 8, 2025  
IGI Report Number **678540184**  
**PRINCESS CUT**  
**NATURAL DIAMOND**  
**4.88 X 4.79 X 3.55 MM**  
Carat Weight **0.70 CARAT**  
Color Grade **I**  
Clarity Grade **VVS 2**  
Cut Grade **VERY GOOD**  
Polish **EXCELLENT**  
Symmetry **EXCELLENT**  
Fluorescence **NONE**  
Inscription(s) **(IGI) 678540184**



THIS DOCUMENT WAS PRODUCED WITH THE FOLLOWING SECURITY MEASURES: SPECIAL DOCUMENT PAPER, INK SCREENS, WATERMARK, BACKGROUND DESIGN, HOLOGRAM AND OTHER SECURITY FEATURES NOT LISTED AND DO EXCEED DOCUMENT SECURITY INDUSTRY GUIDELINES.

For terms & conditions and to verify this report, please visit [www.igi.org](http://www.igi.org)