



INTERNATIONAL GEMOLOGICAL INSTITUTE

DIAMOND REPORT

January 31, 2025
IGI Report Number **678557828**
Description **NATURAL DIAMOND**
Shape and Cutting Style **TRIANGULAR BRILLIANT**
Measurements **5.97 X 7.10 X 2.41 MM**

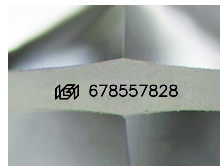
GRADING RESULTS

Carat Weight **0.73 CARAT**
Color Grade **I**
Clarity Grade **VS 1**
Cut Grade **VERY GOOD**

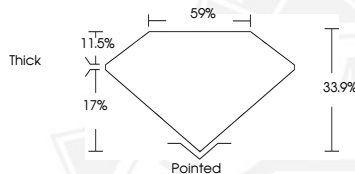
ADDITIONAL GRADING INFORMATION

Polish **EXCELLENT**
Symmetry **EXCELLENT**
Fluorescence **VERY SLIGHT**
Identification Features **CAVITY, NEEDLE, CRYSTAL CLOUD**
Inscription(s) **(IGI) 678557828**

ELECTRONIC COPY



Sample Image Used



January 31, 2025
IGI Report Number **678557828**
TRIANGULAR BRILLIANT
NATURAL DIAMOND
5.97 X 7.10 X 2.41 MM
Carat Weight **0.73 CARAT**
Color Grade **I**
Clarity Grade **VS 1**
Cut Grade **VERY GOOD**
Polish **EXCELLENT**
Symmetry **EXCELLENT**
Fluorescence **VERY SLIGHT**
Inscription(s) **(IGI) 678557828**



January 31, 2025
IGI Report Number **678557828**
TRIANGULAR BRILLIANT
NATURAL DIAMOND
5.97 X 7.10 X 2.41 MM
Carat Weight **0.73 CARAT**
Color Grade **I**
Clarity Grade **VS 1**
Cut Grade **VERY GOOD**
Polish **EXCELLENT**
Symmetry **EXCELLENT**
Fluorescence **VERY SLIGHT**
Inscription(s) **(IGI) 678557828**



THIS DOCUMENT WAS PRODUCED WITH THE FOLLOWING SECURITY MEASURES: SPECIAL DOCUMENT PAPER, INK SCREENS, WATERMARK, BACKGROUND DESIGN, HOLOGRAM AND OTHER SECURITY FEATURES NOT LISTED AND DO EXCEED DOCUMENT SECURITY INDUSTRY GUIDELINES.

For terms & conditions and to verify this report, please visit www.igi.org