



INTERNATIONAL GEMOLOGICAL INSTITUTE

ELECTRONIC COPY

DIAMOND REPORT

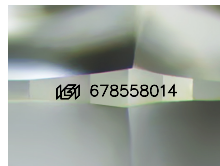
January 31, 2025
IGI Report Number **678558014**
Description **NATURAL DIAMOND**
Shape and Cutting Style **ROUND BRILLIANT**
Measurements **4.40 - 4.43 X 2.74 MM**

GRADING RESULTS

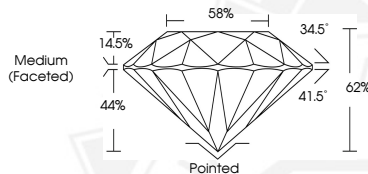
Carat Weight **0.32 CARAT**
Color Grade **H**
Clarity Grade **SI 1**
Cut Grade **EXCELLENT**

ADDITIONAL GRADING INFORMATION

Polish **EXCELLENT**
Symmetry **EXCELLENT**
Fluorescence **NONE**
Identification Features **CRYSTAL, FEATHER**
Inscription(s) **(IGI) 678558014**
Comments: IDEAL CUT ROUND BRILLIANT



Sample Image Used



January 31, 2025
IGI Report Number **678558014**
ROUND BRILLIANT
NATURAL DIAMOND
4.40 - 4.43 X 2.74 MM
Carat Weight **0.32 CARAT**
Color Grade **H**
Clarity Grade **SI 1**
Cut Grade **EXCELLENT**
Polish **EXCELLENT**
Symmetry **EXCELLENT**
Fluorescence **NONE**
Inscription(s) **(IGI) 678558014**
Comments: IDEAL CUT ROUND BRILLIANT



January 31, 2025
IGI Report Number **678558014**
ROUND BRILLIANT
NATURAL DIAMOND
4.40 - 4.43 X 2.74 MM
Carat Weight **0.32 CARAT**
Color Grade **H**
Clarity Grade **SI 1**
Cut Grade **EXCELLENT**
Polish **EXCELLENT**
Symmetry **EXCELLENT**
Fluorescence **NONE**
Inscription(s) **(IGI) 678558014**
Comments: IDEAL CUT ROUND BRILLIANT



THIS DOCUMENT WAS PRODUCED WITH THE FOLLOWING SECURITY MEASURES: SPECIAL DOCUMENT PAPER, INK SCREENS, WATERMARK, BACKGROUND DESIGN, HOLOGRAM AND OTHER SECURITY FEATURES NOT LISTED AND DO EXCEED DOCUMENT SECURITY INDUSTRY GUIDELINES.

For terms & conditions and to verify this report, please visit www.igi.org