



# INTERNATIONAL GEMOLOGICAL INSTITUTE

ELECTRONIC COPY

## DIAMOND REPORT

February 14, 2025

IGI Report Number

678559678

Description

NATURAL DIAMOND

Shape and Cutting Style

ROUND BRILLIANT

Measurements

4.69 - 4.73 X 2.95 MM

## GRADING RESULTS

Carat Weight

0.40 CARAT

Color Grade

J

Clarity Grade

SI 2

Cut Grade

EXCELLENT

## ADDITIONAL GRADING INFORMATION

Polish

EXCELLENT

Symmetry

EXCELLENT

Fluorescence

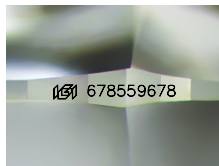
NONE

Identification Features

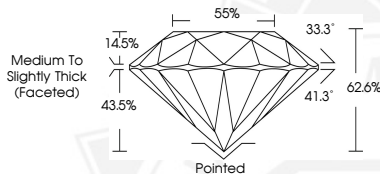
FEATHER, CLOUD, CAVITY

Inscription(s)

678559678



Sample Image Used



February 14, 2025

IGI Report Number 678559678

ROUND BRILLIANT

NATURAL DIAMOND

4.69 - 4.73 X 2.95 MM

Carat Weight 0.40 CARAT

Color Grade J

Clarity Grade SI 2

Cut Grade EXCELLENT

Polish EXCELLENT

Symmetry EXCELLENT

Fluorescence NONE

Inscription(s) 678559678



February 14, 2025

IGI Report Number 678559678

ROUND BRILLIANT

NATURAL DIAMOND

4.69 - 4.73 X 2.95 MM

Carat Weight 0.40 CARAT

Color Grade J

Clarity Grade SI 2

Cut Grade EXCELLENT

Polish EXCELLENT

Symmetry EXCELLENT

Fluorescence NONE

Inscription(s) 678559678



THIS DOCUMENT WAS PRODUCED WITH THE FOLLOWING SECURITY MEASURES: SPECIAL DOCUMENT PAPER, INK SCREENS, WATERMARK, BACKGROUND DESIGNS, HOLOGRAM AND OTHER SECURITY FEATURES NOT LISTED AND DO EXCEED DOCUMENT SECURITY INDUSTRY GUIDELINES.

For terms & conditions and to verify this report, please visit [www.igi.org](http://www.igi.org)