



# INTERNATIONAL GEMOLOGICAL INSTITUTE

ELECTRONIC COPY



February 13, 2025

IGI Report Number 678559815

ROUND BRILLIANT

NATURAL DIAMOND

4.89 - 4.93 X 2.97 MM

Carat Weight 0.43 CARAT

Color Grade I

Clarity Grade VS 1

Cut Grade EXCELLENT

Polish EXCELLENT

Symmetry EXCELLENT

Fluorescence NONE

Inscription(s) IGI 678559815

Comments: IDEAL CUT ROUND  
BRILLIANT

## DIAMOND REPORT

February 13, 2025

IGI Report Number

678559815

Description

NATURAL DIAMOND

Shape and Cutting Style

ROUND BRILLIANT

Measurements

4.89 - 4.93 X 2.97 MM

## GRADING RESULTS

Carat Weight

0.43 CARAT

Color Grade

I

Clarity Grade

VS 1

Cut Grade

EXCELLENT

## ADDITIONAL GRADING INFORMATION

Polish

EXCELLENT

Symmetry

EXCELLENT

Fluorescence

NONE

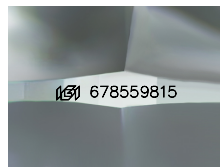
Identification Features

FEATHER

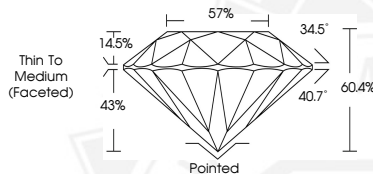
Inscription(s)

IGI 678559815

Comments: IDEAL CUT ROUND BRILLIANT



Sample Image Used



February 13, 2025

IGI Report Number 678559815

ROUND BRILLIANT

NATURAL DIAMOND

4.89 - 4.93 X 2.97 MM

Carat Weight 0.43 CARAT

Color Grade I

Clarity Grade VS 1

Cut Grade EXCELLENT

Polish EXCELLENT

Symmetry EXCELLENT

Fluorescence NONE

Inscription(s) IGI 678559815

Comments: IDEAL CUT ROUND  
BRILLIANT



THIS DOCUMENT WAS PRODUCED WITH THE FOLLOWING SECURITY MEASURES: SPECIAL DOCUMENT PAPER, INK SCREENS, WATERMARK, BACKGROUND DESIGNS, HOLOGRAM AND OTHER SECURITY FEATURES NOT LISTED AND DO EXCEED DOCUMENT SECURITY INDUSTRY GUIDELINES.

For terms & conditions and to verify this report, please visit [www.igi.org](http://www.igi.org)