



# INTERNATIONAL GEMOLOGICAL INSTITUTE

ELECTRONIC COPY



February 13, 2025

IGI Report Number 678559828

ROUND BRILLIANT

NATURAL DIAMOND

4.33 - 4.38 X 2.70 MM

Carat Weight 0.31 CARAT

Color Grade F

Clarity Grade VVS 1

Cut Grade EXCELLENT

Polish EXCELLENT

Symmetry EXCELLENT

Fluorescence VERY SLIGHT

Inscription(s) (IGI) 678559828

Comments: IDEAL CUT ROUND  
BRILLIANT

## DIAMOND REPORT

February 13, 2025

IGI Report Number

678559828

Description

NATURAL DIAMOND

Shape and Cutting Style

ROUND BRILLIANT

Measurements

4.33 - 4.38 X 2.70 MM

## GRADING RESULTS

Carat Weight

0.31 CARAT

Color Grade

F

Clarity Grade

VVS 1

Cut Grade

EXCELLENT

## ADDITIONAL GRADING INFORMATION

Polish

EXCELLENT

Symmetry

EXCELLENT

Fluorescence

VERY SLIGHT

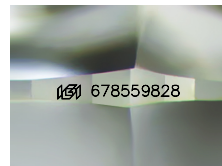
Identification Features

PINPOINT

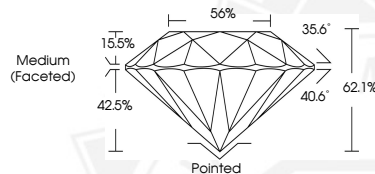
Inscription(s)

(IGI) 678559828

Comments: IDEAL CUT ROUND BRILLIANT



Sample Image Used



February 13, 2025

IGI Report Number 678559828

ROUND BRILLIANT

NATURAL DIAMOND

4.33 - 4.38 X 2.70 MM

Carat Weight 0.31 CARAT

Color Grade F

Clarity Grade VVS 1

Cut Grade EXCELLENT

Polish EXCELLENT

Symmetry EXCELLENT

Fluorescence VERY SLIGHT

Inscription(s) (IGI) 678559828

Comments: IDEAL CUT ROUND  
BRILLIANT



THIS DOCUMENT WAS PRODUCED WITH THE FOLLOWING SECURITY MEASURES: SPECIAL DOCUMENT PAPER, INK SCREENS, WATERMARK, BACKGROUND DESIGN, HOLOGRAM AND OTHER SECURITY FEATURES NOT LISTED AND DO EXCEED DOCUMENT SECURITY INDUSTRY GUIDELINES.

For terms & conditions and to verify this report, please visit [www.igi.org](http://www.igi.org)