



# INTERNATIONAL GEMOLOGICAL INSTITUTE

ELECTRONIC COPY



February 24, 2025

IGI Report Number 678560848

ROUND BRILLIANT

NATURAL DIAMOND

4.66 - 4.70 X 2.91 MM

Carat Weight 0.40 CARAT

Color Grade I

Clarity Grade SI 1

Cut Grade EXCELLENT

Polish EXCELLENT

Symmetry EXCELLENT

Fluorescence NONE

Inscription(s) IGI 678560848

Comments: IDEAL CUT ROUND

BRILLIANT

## DIAMOND REPORT

February 24, 2025

IGI Report Number

678560848

Description

NATURAL DIAMOND

Shape and Cutting Style

ROUND BRILLIANT

Measurements

4.66 - 4.70 X 2.91 MM

## GRADING RESULTS

Carat Weight

0.40 CARAT

Color Grade

I

Clarity Grade

SI 1

Cut Grade

EXCELLENT

## ADDITIONAL GRADING INFORMATION

Polish

EXCELLENT

Symmetry

EXCELLENT

Fluorescence

NONE

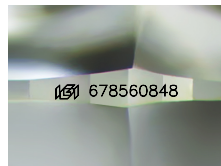
Identification Features

FEATHER

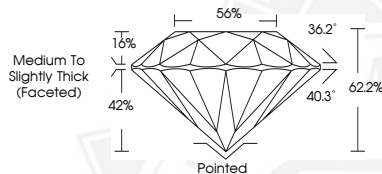
Inscription(s)

IGI 678560848

Comments: IDEAL CUT ROUND BRILLIANT



Sample Image Used



February 24, 2025

IGI Report Number 678560848

ROUND BRILLIANT

NATURAL DIAMOND

4.66 - 4.70 X 2.91 MM

Carat Weight 0.40 CARAT

Color Grade I

Clarity Grade SI 1

Cut Grade EXCELLENT

Polish EXCELLENT

Symmetry EXCELLENT

Fluorescence NONE

Inscription(s) IGI 678560848

Comments: IDEAL CUT ROUND

BRILLIANT



THIS DOCUMENT WAS PRODUCED WITH THE FOLLOWING SECURITY MEASURES: SPECIAL DOCUMENT PAPER, INK SCREENS, WATERMARK, BACKGROUND DESIGNS, HOLOGRAM AND OTHER SECURITY FEATURES NOT LISTED AND DO EXCEED DOCUMENT SECURITY INDUSTRY GUIDELINES.

For terms & conditions and to verify this report, please visit [www.igi.org](http://www.igi.org)