



# INTERNATIONAL GEMOLOGICAL INSTITUTE

## DIAMOND REPORT

February 28, 2025

IGI Report Number

Description

Shape and Cutting Style

Measurements

678561421

NATURAL DIAMOND

ROUND BRILLIANT

5.70 - 5.72 X 3.52 MM

## GRADING RESULTS

Carat Weight

Color Grade

Clarity Grade

Cut Grade

0.71 CARAT

G

VS 2

EXCELLENT

## ADDITIONAL GRADING INFORMATION

Polish

Symmetry

Fluorescence

Identification Features

Inscription(s)

Comments: IDEAL CUT ROUND BRILLIANT

EXCELLENT

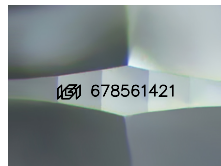
EXCELLENT

STRONG

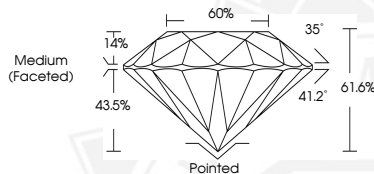
CRYSTAL CLOUD

IGI 678561421

ELECTRONIC COPY



Sample Image Used



February 28, 2025

IGI Report Number 678561421

ROUND BRILLIANT

NATURAL DIAMOND

5.70 - 5.72 X 3.52 MM

Carat Weight 0.71 CARAT

Color Grade G

Clarity Grade VS 2

Cut Grade EXCELLENT

Polish EXCELLENT

Symmetry EXCELLENT

Fluorescence STRONG

Inscription(s) IGI 678561421

Comments: IDEAL CUT ROUND BRILLIANT



February 28, 2025

IGI Report Number 678561421

ROUND BRILLIANT

NATURAL DIAMOND

5.70 - 5.72 X 3.52 MM

Carat Weight 0.71 CARAT

Color Grade G

Clarity Grade VS 2

Cut Grade EXCELLENT

Polish EXCELLENT

Symmetry EXCELLENT

Fluorescence STRONG

Inscription(s) IGI 678561421

Comments: IDEAL CUT ROUND BRILLIANT



THIS DOCUMENT WAS PRODUCED WITH THE FOLLOWING SECURITY MEASURES: SPECIAL DOCUMENT PAPER, INK SCREENS, WATERMARK, BACKGROUND DESIGNS, HOLOGRAM AND OTHER SECURITY FEATURES NOT LISTED AND DO EXCEED DOCUMENT SECURITY INDUSTRY GUIDELINES.

For terms & conditions and to verify this report, please visit [www.igi.org](http://www.igi.org)