



# INTERNATIONAL GEMOLOGICAL INSTITUTE

ELECTRONIC COPY



May 24, 2025

IGI Report Number 679508430

ROUND BRILLIANT

NATURAL DIAMOND

4.30 - 4.33 X 2.67 MM

Carat Weight	0.30 CARAT
Color Grade	E
Clarity Grade	VVS 1
Cut Grade	EXCELLENT
Polish	EXCELLENT
Symmetry	EXCELLENT
Fluorescence	VERY SLIGHT
Inscription(s)	IGI 679508430

## DIAMOND REPORT

May 24, 2025

IGI Report Number

679508430

Description

NATURAL DIAMOND

Shape and Cutting Style

ROUND BRILLIANT

Measurements

4.30 - 4.33 X 2.67 MM

## GRADING RESULTS

Carat Weight

0.30 CARAT

Color Grade

E

Clarity Grade

VVS 1

Cut Grade

EXCELLENT

## ADDITIONAL GRADING INFORMATION

Polish

EXCELLENT

Symmetry

EXCELLENT

Fluorescence

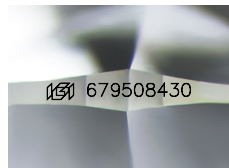
VERY SLIGHT

Identification Features

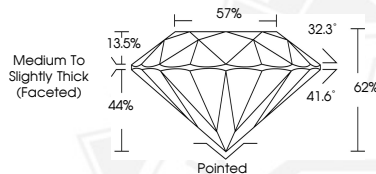
PINPOINT

Inscription(s)

IGI 679508430



Sample Image Used



Medium To  
Slightly Thick  
(Faceted)

Pointed



May 24, 2025

IGI Report Number 679508430

ROUND BRILLIANT

NATURAL DIAMOND

4.30 - 4.33 X 2.67 MM

Carat Weight	0.30 CARAT
Color Grade	E
Clarity Grade	VVS 1
Cut Grade	EXCELLENT
Polish	EXCELLENT
Symmetry	EXCELLENT
Fluorescence	VERY SLIGHT
Inscription(s)	IGI 679508430



THIS DOCUMENT WAS PRODUCED WITH THE FOLLOWING SECURITY MEASURES: SPECIAL DOCUMENT PAPER, INK SCREENS, WATERMARK, BACKGROUND DESIGNS, HOLOGRAM AND OTHER SECURITY FEATURES NOT LISTED AND DO EXCEED DOCUMENT SECURITY INDUSTRY GUIDELINES.

For terms & conditions and to verify this report, please visit [www.igi.org](http://www.igi.org)