



INTERNATIONAL GEMOLOGICAL INSTITUTE

DIAMOND REPORT

March 7, 2025
IGI Report Number **680575544**
Description **NATURAL DIAMOND**
Shape and Cutting Style **ROUND BRILLIANT**
Measurements **4.66 - 4.69 X 2.95 MM**

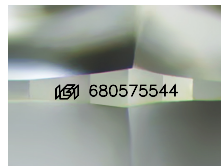
GRADING RESULTS

Carat Weight **0.40 CARAT**
Color Grade **L**
Clarity Grade **VVS 1**
Cut Grade **EXCELLENT**

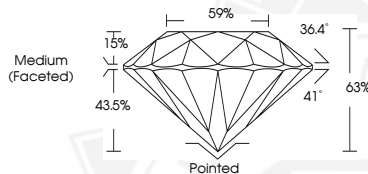
ADDITIONAL GRADING INFORMATION

Polish **EXCELLENT**
Symmetry **EXCELLENT**
Fluorescence **SLIGHT**
Identification Features **PINPOINT**
Inscription(s) **IGI 680575544**

ELECTRONIC COPY



Sample Image Used



March 7, 2025
IGI Report Number **680575544**
ROUND BRILLIANT
NATURAL DIAMOND
4.66 - 4.69 X 2.95 MM
Carat Weight **0.40 CARAT**
Color Grade **L**
Clarity Grade **VVS 1**
Cut Grade **EXCELLENT**
Polish **EXCELLENT**
Symmetry **EXCELLENT**
Fluorescence **SLIGHT**
Inscription(s) **IGI 680575544**



March 7, 2025
IGI Report Number **680575544**
ROUND BRILLIANT
NATURAL DIAMOND
4.66 - 4.69 X 2.95 MM
Carat Weight **0.40 CARAT**
Color Grade **L**
Clarity Grade **VVS 1**
Cut Grade **EXCELLENT**
Polish **EXCELLENT**
Symmetry **EXCELLENT**
Fluorescence **SLIGHT**
Inscription(s) **IGI 680575544**



THIS DOCUMENT WAS PRODUCED WITH THE FOLLOWING SECURITY MEASURES: SPECIAL DOCUMENT PAPER, INK SCREENS, WATERMARK, BACKGROUND DESIGN, HOLOGRAM AND OTHER SECURITY FEATURES NOT LISTED AND DO EXCEED DOCUMENT SECURITY INDUSTRY GUIDELINES.

For terms & conditions and to verify this report, please visit www.igi.org