



**ELECTRONIC COPY**

## DIAMOND REPORT

February 13, 2025	
IGI Report Number	681510832
Description	NATURAL DIAMOND
Shape and Cutting Style	ROUND BRILLIANT
Measurements	6.95 - 6.99 X 4.28 MM

## GRADING RESULTS

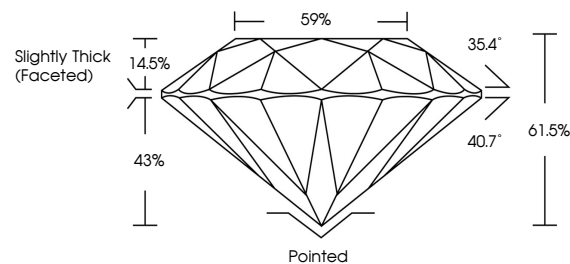
Carat Weight	1.30 CARAT
Color Grade	H
Clarity Grade	INTERNALLY FLAWLESS
Cut Grade	EXCELLENT

### ADDITIONAL GRADING INFORMATION

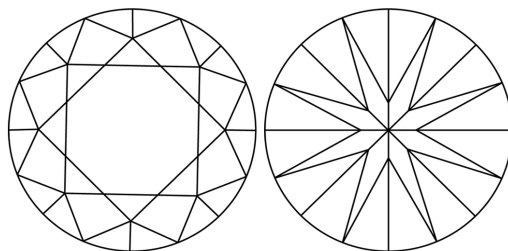
Polish	EXCELLENT
Symmetry	EXCELLENT
Fluorescence	NONE
Inscription(s)	 681510832
Comments: IDEAL CUT ROUND BRILLIANT	

681510832  
Report verification at [igi.org](https://igi.org)

## PROPORTIONS

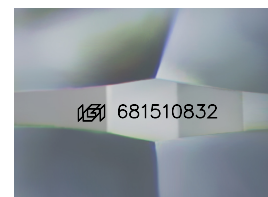


## CLARITY CHARACTERISTICS



### KEY TO SYMBOLS

Red symbols indicate internal characteristics.  
Green symbols indicate external characteristics.



Sample Image Used

**COLOR**

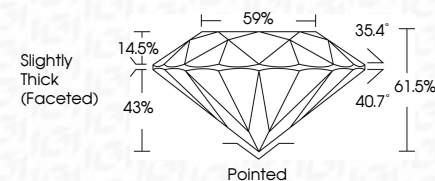
D - F	G - J	K - M	N - R	S - Z	FANCY
Colorless	Near Colorless	Slightly Tinted	Very Light Color	Light Color	

## CLARITY

IF	VVS <sup>1-2</sup>	VS <sup>1-2</sup>	SI <sup>1-2</sup>	I <sup>1-3</sup>
Internally Flawless	Very Very Slightly Included	Very Slightly Included	Slightly Included	Included



February 13, 2025	
IGI Report Number	681510832
Description	NATURAL DIAMOND
Shape and Cutting Style	ROUND BRILLIANT
Measurements	6.95 - 6.99 X 4.28 MM
GRADING RESULTS	
Carat Weight	1.30 CARAT
Color Grade	H
Clarity Grade	INTERNALLY FLAWLESS
Cut Grade	EXCELLENT



### ADDITIONAL GRADING INFORMATION

Polish	EXCELLENT
Symmetry	EXCELLENT
Fluorescence	NONE
Inscription(s)	 681510832
Comments: IDEAL CUT ROUND BRILLIANT	



IG



© IGI 2020, International Gemological Institute

FD - 10 20



THIS DOCUMENT WAS PRODUCED WITH THE FOLLOWING SECURITY MEASURES: SPECIAL DOCUMENT PAPER, INK SCREENS, WATERMARK, BACKGROUND DESIGNS, HOLOGRAM AND OTHER SECURITY FEATURES NOT LISTED AND DO EXCEED DOCUMENT SECURITY INDUSTRY GUIDELINES

**www.igi.org**

February 13, 2025  
IGI Report No 68151  
ROUND BRILLIANT

6.95 - 6.99 X 4.28 MM	1.30 CARAT
Carat Weight	H
Color Grade	IF
Clarity Grade	EXCELLENT
Cut Grade	61.5%
Depth	59%
Table	Slightly Thick (Excellent)
Girdle	

Culet	Pointed
Polish	EXCELLENT
Symmetry	EXCELLENT
Fluorescence	NONE
Identification (c)	4571 4815 10932

**Comments:**  
IDEAL CUT POLINO BRILLIANT