



**ELECTRONIC COPY**

## DIAMOND REPORT

April 22, 2025	
IGI Report Number	683502263
Description	NATURAL DIAMOND
Shape and Cutting Style	CUT CORNERED RECTANGULAR MODIFIED BRILLIANT
Measurements	8.10 X 5.80 X 3.97 MM

## GRADING RESULTS

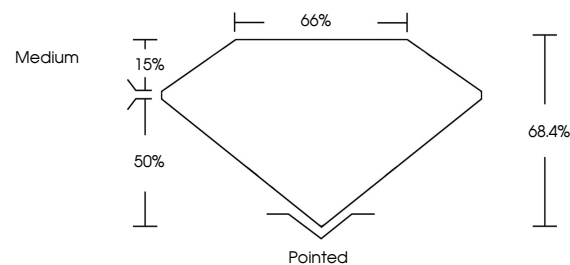
Carat Weight	1.71 CARAT
Color Grade	I
Clarity Grade	VS 2
Cut Grade	EXCELLENT

### ADDITIONAL GRADING INFORMATION

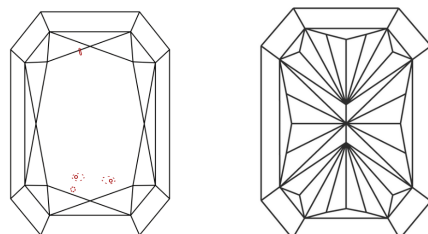
Polish	EXCELLENT
Symmetry	EXCELLENT
Fluorescence	NONE
Inscription(s)	151 683502263

683502263  
Report verification at [igi.org](http://igi.org)

## PROPORTIONS

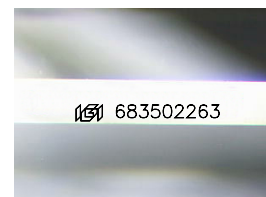


## CLARITY CHARACTERISTICS



### KEY TO SYMBOLS

Red symbols indicate internal characteristics.  
Green symbols indicate external characteristics.



Sample Image Used

**COLOR**

D - F	G - J	K - M	N - R	S - Z	FANCY
Colorless	Near Colorless	Slightly Tinted	Very Light Color	Light Color	

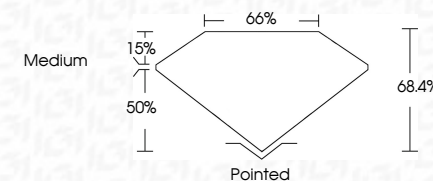
## CLARITY

IF	VVS <sup>1-2</sup>	VS <sup>1-2</sup>	SI <sup>1-2</sup>	I <sup>1-3</sup>
Internally Flawless	Very Very Slightly Included	Very Slightly Included	Slightly Included	Included

## DIAMOND REPORT



April 22, 2025	
IGI Report Number	683502263
Description	NATURAL DIAMOND
Shape and Cutting Style	CUT CORNERED RECTANGULAR MODIFIED BRILLIANT
Measurements	8.10 X 5.80 X 3.97 MM
GRADING RESULTS	
Carat Weight	1.71 CARAT
Color Grade	I
Clarity Grade	VS 2
Cut Grade	EXCELLENT



### ADDITIONAL GRADING INFORMATION

Polish	EXCELLENT
Symmetry	EXCELLENT
Fluorescence	NONE
Inscription(s)	151 683502263



© IGI 2020, International Gemological Institute

FD - 10 20

**www.igi.org**



THIS DOCUMENT WAS PRODUCED WITH THE FOLLOWING SECURITY MEASURES: SPECIAL DOCUMENT PAPER, INK SCREENS, WATERMARK, BACKGROUND DESIGNS, HOLOGRAM AND OTHER SECURITY FEATURES NOT LISTED AND DO EXCEED DOCUMENT SECURITY INDUSTRY GUIDELINE

April 22, 2025
GJ Report No 6
CUT CORNERED
3.10 X 5.80 X 3.3
Carat Weight
Color Grade
Clarity Grade
Cut Grade
Depth
Table
Graile
Culet
Polish
Symmetry
Fluorescence
Observations(s)