



**ELECTRONIC COPY**

## DIAMOND REPORT

|                         |                       |
|-------------------------|-----------------------|
| February 19, 2025       |                       |
| IGI Report Number       | 683513991             |
| Description             | NATURAL DIAMOND       |
| Shape and Cutting Style | ROUND BRILLIANT       |
| Measurements            | 9.60 - 9.66 X 6.07 MM |

## GRADING RESULTS

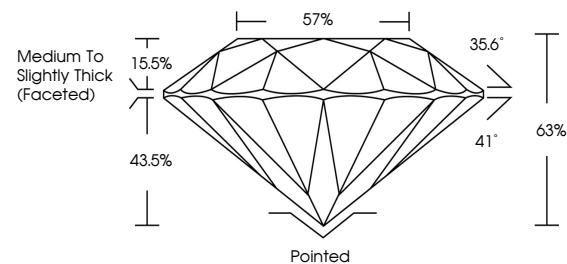
|               |             |
|---------------|-------------|
| Carat Weight  | 3.50 CARATS |
| Color Grade   | K           |
| Clarity Grade | SI 1        |
| Cut Grade     | EXCELLENT   |

### ADDITIONAL GRADING INFORMATION

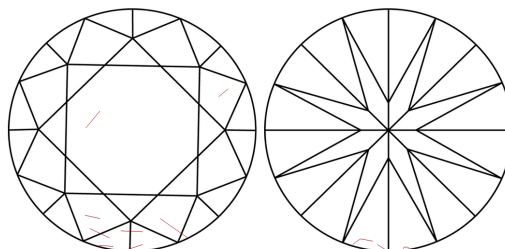
|                |               |
|----------------|---------------|
| Polish         | EXCELLENT     |
| Symmetry       | EXCELLENT     |
| Fluorescence   | NONE          |
| Inscription(s) | 151 683513991 |

683513991  
Report verification at [igi.org](https://igi.org)

## PROPORTIONS

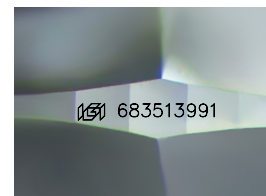


## CLARITY CHARACTERISTICS



## KEY TO SYMBOLS

Red symbols indicate internal characteristics.  
Green symbols indicate external characteristics.



Sample Image Used

**COLOR**

| D - F     | G - J          | K - M           | N - R            | S - Z       | FANCY |
|-----------|----------------|-----------------|------------------|-------------|-------|
| Colorless | Near Colorless | Slightly Tinted | Very Light Color | Light Color |       |

## CLARITY

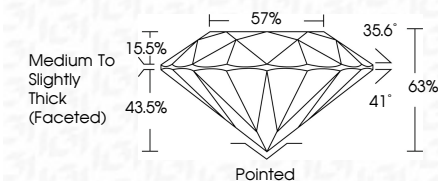
| IF                  | VS <sup>1-2</sup>           | VS <sup>1-2</sup>      | SI <sup>1-2</sup> | I <sup>1-3</sup> |
|---------------------|-----------------------------|------------------------|-------------------|------------------|
| Internally Flawless | Very Very Slightly Included | Very Slightly Included | Slightly Included | Included         |



|                         |                       |
|-------------------------|-----------------------|
| February 19, 2025       |                       |
| IGI Report Number       | 683513991             |
| Description             | NATURAL DIAMOND       |
| Shape and Cutting Style | ROUND BRILLIANT       |
| Measurements            | 9.60 - 9.66 X 6.07 MM |

## GRADING RESULTS

|               |             |
|---------------|-------------|
| Carat Weight  | 3.50 CARATS |
| Color Grade   | K           |
| Clarity Grade | SI 1        |
| Cut Grade     | EXCELLENT   |



### ADDITIONAL GRADING INFORMATION

|                |           |
|----------------|-----------|
| Polish         | EXCELLENT |
| Symmetry       | EXCELLENT |
| Fluorescence   | NONE      |
| Inscription(s) | 168513991 |



© IGI 2020, International Gemological Institute

FD - 10 20



THIS DOCUMENT WAS PRODUCED WITH THE FOLLOWING SECURITY MEASURES: SPECIAL DOCUMENT PAPER, INK SCREENS, WATERMARK, BACKGROUND DESIGNS, HOLOGRAM AND OTHER SECURITY FEATURES NOT LISTED AND DO EXCEED DOCUMENT SECURITY INDUSTRY GUIDELINES

**www.igi.org**

February 19, 2025  
 IGI Report No 683513991  
 BOUND BRILLIANT

|             |                   |               |                                    |
|-------------|-------------------|---------------|------------------------------------|
| 3.50 CARATS | Color Grade       | Clarity Grade | \$1                                |
| K           |                   | Cut Grade     | EXCELLENT                          |
|             |                   | Depth         | 65%                                |
|             |                   | Table         | 57%                                |
|             |                   | Girdle        | Medium to Slightly Thick (Faceted) |
|             |                   | Culet         | Pointed                            |
|             |                   | Polish        | EXCELLENT                          |
|             | Symmetry          |               | EXCELLENT                          |
|             | Fluorescence      |               | NONE                               |
|             | Measurements (mm) |               | 8.48 x 5.51 x 3.00                 |