



**ELECTRONIC COPY**

## DIAMOND REPORT

March 6, 2025	
IGI Report Number	685548680
Description	NATURAL DIAMOND
Shape and Cutting Style	EMERALD CUT
Measurements	7.69 X 5.35 X 3.63 MM

## GRADING RESULTS

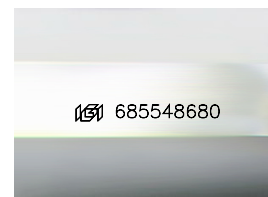
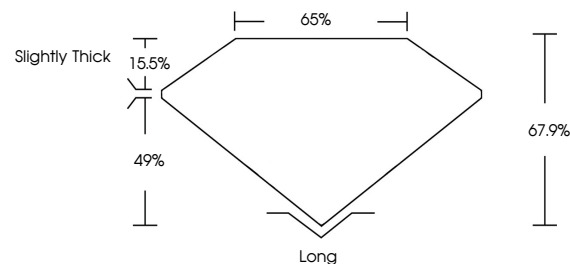
Carat Weight	1.51 CARAT
Color Grade	K
Clarity Grade	VS 1
Cut Grade	VERY GOOD

### ADDITIONAL GRADING INFORMATION

Polish	EXCELLENT
Symmetry	EXCELLENT
Fluorescence	VERY SLIGHT
Inscription(s)	131 685548680

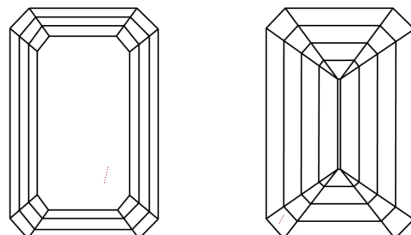
685548680  
Report verification at [igi.org](http://igi.org)

## PROPORTIONS



Sample Image Used

## CLARITY CHARACTERISTICS



## KEY TO SYMBOLS

Red symbols indicate internal characteristics.  
Green symbols indicate external characteristics.

**COLOR**

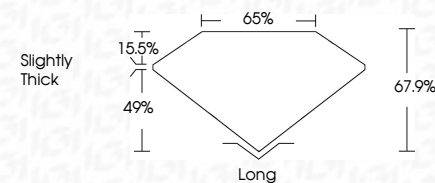
D - F	G - J	K - M	N - R	S - Z	FANCY
Colorless	Near Colorless	Slightly Tinted	Very Light Color	Light Color	

## CLARITY

IF	VVS <sup>1-2</sup>	VS <sup>1-2</sup>	SI <sup>1-2</sup>	I <sup>1-3</sup>
Internally Flawless	Very Very Slightly Included	Very Slightly Included	Slightly Included	Included



March 6, 2025	
IGI Report Number	685548680
Description	NATURAL DIAMOND
Shape and Cutting Style	EMERALD CUT
Measurements	7.69 X 5.35 X 3.63 MM
GRADING RESULTS	
Carat Weight	1.51 CARAT
Color Grade	K
Clarity Grade	VS 1
Cut Grade	VERY GOOD



### ADDITIONAL GRADING INFORMATION

Polish	EXCELLENT
Symmetry	EXCELLENT
Fluorescence	VERY SLIGHT
Inscription(s)	(15) 685548680



IGI



© IGI 2020, International Gemological Institute

FD - 10 20



THIS DOCUMENT WAS PRODUCED WITH THE FOLLOWING SECURITY MEASURES: SPECIAL DOCUMENT PAPER, INK SCREENS, WATERMARK, BACKGROUND DESIGNS, HOLOGRAM, AND OTHER SECURITY FEATURES NOT LISTED AND DO EXCEED DOCUMENT SECURITY INDUSTRY GUIDELINES

**www.igi.org**

March 6, 2025  
 FBI Report No 685548680  
 EMERALD CITY

1.69 X 3.85 X 3.03 MM	1.51 CARAT
Carat Weight	
Color Grade	
Clarity Grade	Vs1
Cut Grade	VERY GOOD
Depth	67.9%
Table	65%
Girdle	Slightly Thick
Culet	Long
Polish	EXCELLENT
Symmetry	EXCELLENT
Fluorescence	VERY SLIGHT
Inclusions(s)	near AP55-6590