



# INTERNATIONAL GEMOLOGICAL INSTITUTE

ELECTRONIC COPY

## DIAMOND REPORT

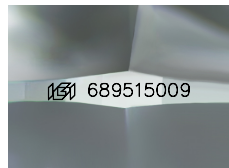
April 24, 2025  
IGI Report Number **689515009**  
Description **NATURAL DIAMOND**  
Shape and Cutting Style **ROUND BRILLIANT**  
Measurements **4.65 - 4.69 X 2.96 MM**

### GRADING RESULTS

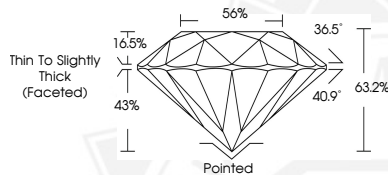
Carat Weight **0.40 CARAT**  
Color Grade **D**  
Clarity Grade **I 1**  
Cut Grade **EXCELLENT**

### ADDITIONAL GRADING INFORMATION

Polish **EXCELLENT**  
Symmetry **EXCELLENT**  
Fluorescence **NONE**  
Identification Features **FEATHER**  
Inscription(s) **IGI 689515009**



Sample Image Used



April 24, 2025  
IGI Report Number **689515009**  
ROUND BRILLIANT  
NATURAL DIAMOND  
**4.65 - 4.69 X 2.96 MM**  
Carat Weight **0.40 CARAT**  
Color Grade **D**  
Clarity Grade **I 1**  
Cut Grade **EXCELLENT**  
Polish **EXCELLENT**  
Symmetry **EXCELLENT**  
Fluorescence **NONE**  
Inscription(s) **IGI 689515009**



April 24, 2025  
IGI Report Number **689515009**  
ROUND BRILLIANT  
NATURAL DIAMOND  
**4.65 - 4.69 X 2.96 MM**  
Carat Weight **0.40 CARAT**  
Color Grade **D**  
Clarity Grade **I 1**  
Cut Grade **EXCELLENT**  
Polish **EXCELLENT**  
Symmetry **EXCELLENT**  
Fluorescence **NONE**  
Inscription(s) **IGI 689515009**



THIS DOCUMENT WAS PRODUCED WITH THE FOLLOWING SECURITY MEASURES: SPECIAL DOCUMENT PAPER, INK SCREENS, WATERMARK, BACKGROUND DESIGNS, HOLOGRAM AND OTHER SECURITY FEATURES NOT LISTED AND DO EXCEED DOCUMENT SECURITY INDUSTRY GUIDELINES.

For terms & conditions and to verify this report, please visit [www.igi.org](http://www.igi.org)