



# INTERNATIONAL GEMOLOGICAL INSTITUTE

## DIAMOND REPORT

April 14, 2025  
IGI Report Number **691520433**  
Description **NATURAL DIAMOND**  
Shape and Cutting Style **ROUND BRILLIANT**  
Measurements **5.21 - 5.24 X 3.29 MM**

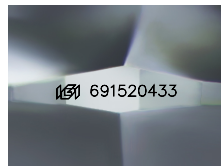
## GRADING RESULTS

Carat Weight **0.56 CARAT**  
Color Grade **H**  
Clarity Grade **VS 2**  
Cut Grade **EXCELLENT**

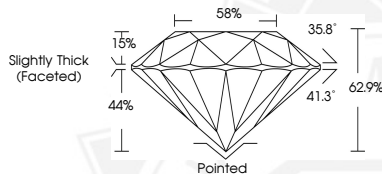
## ADDITIONAL GRADING INFORMATION

Polish **EXCELLENT**  
Symmetry **EXCELLENT**  
Fluorescence **NONE**  
Identification Features **FEATHER, CRYSTAL**  
Inscription(s) **IGI 691520433**

ELECTRONIC COPY



Sample Image Used



April 14, 2025  
IGI Report Number **691520433**  
ROUND BRILLIANT  
NATURAL DIAMOND  
5.21 - 5.24 X 3.29 MM  
Carat Weight **0.56 CARAT**  
Color Grade **H**  
Clarity Grade **VS 2**  
Cut Grade **EXCELLENT**  
Polish **EXCELLENT**  
Symmetry **EXCELLENT**  
Fluorescence **NONE**  
Inscription(s) **IGI 691520433**



April 14, 2025  
IGI Report Number **691520433**  
ROUND BRILLIANT  
NATURAL DIAMOND  
5.21 - 5.24 X 3.29 MM  
Carat Weight **0.56 CARAT**  
Color Grade **H**  
Clarity Grade **VS 2**  
Cut Grade **EXCELLENT**  
Polish **EXCELLENT**  
Symmetry **EXCELLENT**  
Fluorescence **NONE**  
Inscription(s) **IGI 691520433**



THIS DOCUMENT WAS PRODUCED WITH THE FOLLOWING SECURITY MEASURES: SPECIAL DOCUMENT PAPER, INK SCREENS, WATERMARK, BACKGROUND DESIGN, HOLOGRAM AND OTHER SECURITY FEATURES NOT LISTED AND DO EXCEED DOCUMENT SECURITY INDUSTRY GUIDELINES.

For terms & conditions and to verify this report, please visit [www.igi.org](http://www.igi.org)