



**ELECTRONIC COPY**

## DIAMOND REPORT

April 7, 2025	
IGI Report Number	691554309
Description	NATURAL DIAMOND
Shape and Cutting Style	EMERALD CUT
Measurements	7.98 X 5.28 X 3.55 MM

## GRADING RESULTS

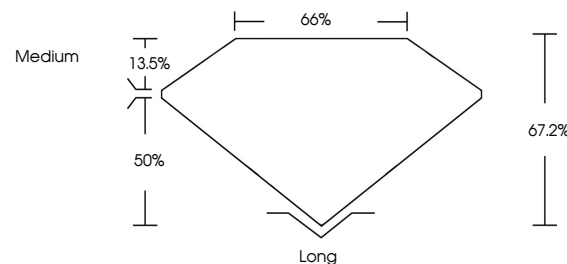
Carat Weight	1.50 CARAT
Color Grade	L
Clarity Grade	VVS 2
Cut Grade	VERY GOOD

### ADDITIONAL GRADING INFORMATION

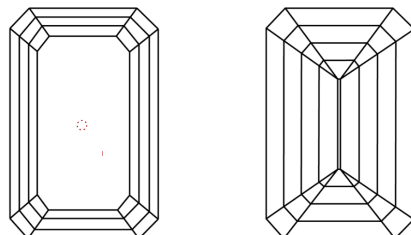
Polish	EXCELLENT
Symmetry	EXCELLENT
Fluorescence	VERY SLIGHT
Inscription(s)	131 691554309

691554309  
Report verification at [igi.org](http://igi.org)

## PROPORTIONS

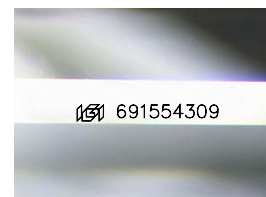


## CLARITY CHARACTERISTICS



## KEY TO SYMBOLS

Red symbols indicate internal characteristics.  
Green symbols indicate external characteristics.



Sample Image Used

**COLOR**

D - F	G - J	K - M	N - R	S - Z	FANCY
Colorless	Near Colorless	Slightly Tinted	Very Light Color	Light Color	

## CLARITY

IF	VVS <sup>1-2</sup>	VS <sup>1-2</sup>	SI <sup>1-2</sup>	I <sup>1-3</sup>
Internally Flawless	Very Very Slightly Included	Very Slightly Included	Slightly Included	Included

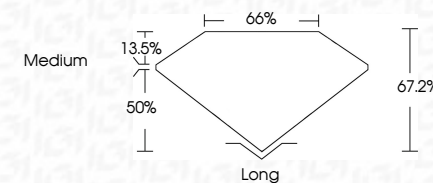
## DIAMOND REPORT



April 7, 2025	
IGI Report Number	691554309
Description	NATURAL DIAMOND
Shape and Cutting Style	EMERALD CUT
Measurements	7.98 X 5.28 X 3.55 MM

## GRADING RESULTS

Carat Weight	1.50 CARAT
Color Grade	L
Clarity Grade	VVS 2
Cut Grade	VERY GOOD



### ADDITIONAL GRADING INFORMATION

Polish	EXCELLENT
Symmetry	EXCELLENT
Fluorescence	VERY SLIGHT
Inscription(s)	(18) 691554309



© IGI 2020, International Gemological Institute

FD - 10 20



THIS DOCUMENT WAS PRODUCED WITH THE FOLLOWING SECURITY MEASURES: SPECIAL DOCUMENT PAPER, INK SCREENS, WATERMARK, BACKGROUND DESIGNS, HOLOGRAM AND OTHER SECURITY FEATURES NOT LISTED AND DO EXCEED DOCUMENT SECURITY INDUSTRY GUIDELINE

April 7, 2025  
GI Report No 691554309  
EMERALD CITY

1.90 X 5.28 X 3.65 MM	1.50 CARAT	Long
Carat Weight	VVS 2	EXCELLENT
Color Grade	VERY GOOD	EXCELLENT
Clarity Grade	67/26	VERY SLIGHT
Cut Grade	66%	VERY SLIGHT
Depth	Medium	VERY SLIGHT
Table		VERY SLIGHT
Girdle		VERY SLIGHT
Culet		VERY SLIGHT
Polish		VERY SLIGHT
Symmetry		VERY SLIGHT
Fluorescence		VERY SLIGHT