



# INTERNATIONAL GEMOLOGICAL INSTITUTE

ELECTRONIC COPY

## DIAMOND REPORT

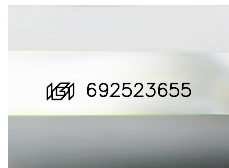
April 29, 2025  
IGI Report Number **692523655**  
Description **NATURAL DIAMOND**  
Shape and Cutting Style **CUT CORNERED RECTANGULAR MIXED CUT**  
Measurements **6.04 X 4.47 X 3.31 MM**

### GRADING RESULTS

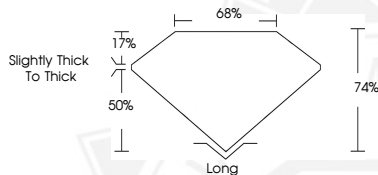
Carat Weight **0.90 CARAT**  
Color Grade **I**  
Clarity Grade **VS 2**  
Cut Grade **VERY GOOD**

### ADDITIONAL GRADING INFORMATION

Polish **EXCELLENT**  
Symmetry **EXCELLENT**  
Fluorescence **STRONG**  
Identification Features **CRYSTAL, CLOUD, PINPOINT**  
Inscription(s) **IGI 692523655**



Sample Image Used



April 29, 2025  
IGI Report Number **692523655**  
CUT CORNERED RECTANGULAR  
MIXED CUT  
NATURAL DIAMOND  
**6.04 X 4.47 X 3.31 MM**  
Carat Weight **0.90 CARAT**  
Color Grade **I**  
Clarity Grade **VS 2**  
Cut Grade **VERY GOOD**  
Polish **EXCELLENT**  
Symmetry **EXCELLENT**  
Fluorescence **STRONG**  
Inscription(s) **IGI 692523655**



April 29, 2025  
IGI Report Number **692523655**  
CUT CORNERED RECTANGULAR  
MIXED CUT  
NATURAL DIAMOND  
**6.04 X 4.47 X 3.31 MM**  
Carat Weight **0.90 CARAT**  
Color Grade **I**  
Clarity Grade **VS 2**  
Cut Grade **VERY GOOD**  
Polish **EXCELLENT**  
Symmetry **EXCELLENT**  
Fluorescence **STRONG**  
Inscription(s) **IGI 692523655**



THIS DOCUMENT WAS PRODUCED WITH THE FOLLOWING SECURITY MEASURES: SPECIAL DOCUMENT PAPER, INK SCREENS, WATERMARK, BACKGROUND DESIGNS, HOLOGRAM AND OTHER SECURITY FEATURES NOT LISTED AND DO EXCEED DOCUMENT SECURITY INDUSTRY GUIDELINES.

For terms & conditions and to verify this report, please visit [www.igi.org](http://www.igi.org)