



INTERNATIONAL GEMOLOGICAL INSTITUTE

DIAMOND REPORT

April 22, 2025
IGI Report Number **694524258**
Description **NATURAL DIAMOND**
Shape and Cutting Style **ROUND BRILLIANT**
Measurements **5.32 - 5.36 X 3.39 MM**

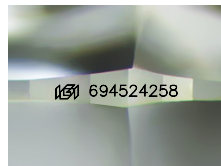
GRADING RESULTS

Carat Weight **0.60 CARAT**
Color Grade **H**
Clarity Grade **VS 1**
Cut Grade **EXCELLENT**

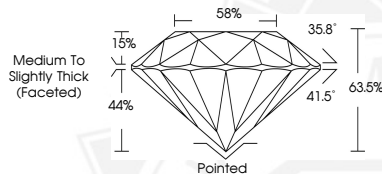
ADDITIONAL GRADING INFORMATION

Polish **EXCELLENT**
Symmetry **EXCELLENT**
Fluorescence **VERY SLIGHT**
Identification Features **FEATHER**
Inscription(s) **(IGI) 694524258**

ELECTRONIC COPY



Sample Image Used



Medium To
Slightly Thick
(Faceted)

Pointed



April 22, 2025
IGI Report Number **694524258**
ROUND BRILLIANT
NATURAL DIAMOND
5.32 - 5.36 X 3.39 MM
Carat Weight **0.60 CARAT**
Color Grade **H**
Clarity Grade **VS 1**
Cut Grade **EXCELLENT**
Polish **EXCELLENT**
Symmetry **EXCELLENT**
Fluorescence **VERY SLIGHT**
Inscription(s) **(IGI) 694524258**



April 22, 2025
IGI Report Number **694524258**
ROUND BRILLIANT
NATURAL DIAMOND
5.32 - 5.36 X 3.39 MM
Carat Weight **0.60 CARAT**
Color Grade **H**
Clarity Grade **VS 1**
Cut Grade **EXCELLENT**
Polish **EXCELLENT**
Symmetry **EXCELLENT**
Fluorescence **VERY SLIGHT**
Inscription(s) **(IGI) 694524258**



THIS DOCUMENT WAS PRODUCED WITH THE FOLLOWING SECURITY MEASURES: SPECIAL DOCUMENT PAPER, INK SCREENS, WATERMARK, BACKGROUND DESIGNS, HOLOGRAM AND OTHER SECURITY FEATURES NOT LISTED AND DO EXCEED DOCUMENT SECURITY INDUSTRY GUIDELINES.

For terms & conditions and to verify this report, please visit www.igi.org