



# INTERNATIONAL GEMOLOGICAL INSTITUTE

## DIAMOND REPORT

April 28, 2025  
IGI Report Number **694524266**  
Description **NATURAL DIAMOND**  
Shape and Cutting Style **ROUND BRILLIANT**  
Measurements **5.32 - 5.36 X 3.35 MM**

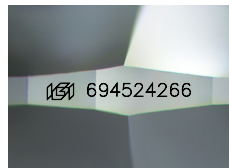
### GRADING RESULTS

Carat Weight **0.60 CARAT**  
Color Grade **I**  
Clarity Grade **VVS 1**  
Cut Grade **EXCELLENT**

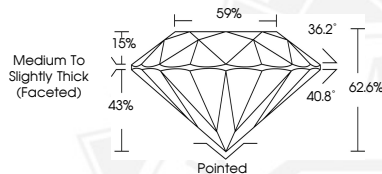
### ADDITIONAL GRADING INFORMATION

Polish **EXCELLENT**  
Symmetry **EXCELLENT**  
Fluorescence **VERY SLIGHT**  
Identification Features **PINPOINT, FEATHER**  
Inscription(s) **IGI 694524266**

ELECTRONIC COPY



Sample Image Used



April 28, 2025  
IGI Report Number **694524266**  
ROUND BRILLIANT  
NATURAL DIAMOND  
5.32 - 5.36 X 3.35 MM  
Carat Weight **0.60 CARAT**  
Color Grade **I**  
Clarity Grade **VVS 1**  
Cut Grade **EXCELLENT**  
Polish **EXCELLENT**  
Symmetry **EXCELLENT**  
Fluorescence **VERY SLIGHT**  
Inscription(s) **IGI 694524266**



April 28, 2025  
IGI Report Number **694524266**  
ROUND BRILLIANT  
NATURAL DIAMOND  
5.32 - 5.36 X 3.35 MM  
Carat Weight **0.60 CARAT**  
Color Grade **I**  
Clarity Grade **VVS 1**  
Cut Grade **EXCELLENT**  
Polish **EXCELLENT**  
Symmetry **EXCELLENT**  
Fluorescence **VERY SLIGHT**  
Inscription(s) **IGI 694524266**



THIS DOCUMENT WAS PRODUCED WITH THE FOLLOWING SECURITY MEASURES: SPECIAL DOCUMENT PAPER, INK SCREENS, WATERMARK, BACKGROUND DESIGNS, HOLOGRAM AND OTHER SECURITY FEATURES NOT LISTED AND DO EXCEED DOCUMENT SECURITY INDUSTRY GUIDELINES.

For terms & conditions and to verify this report, please visit [www.igi.org](http://www.igi.org)