



INTERNATIONAL GEMOLOGICAL INSTITUTE

ELECTRONIC COPY

DIAMOND REPORT

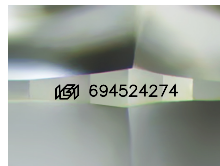
April 22, 2025
IGI Report Number **694524274**
Description **NATURAL DIAMOND**
Shape and Cutting Style **ROUND BRILLIANT**
Measurements **5.66 - 5.70 X 3.51 MM**

GRADING RESULTS

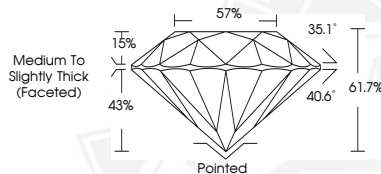
Carat Weight **0.70 CARAT**
Color Grade **I**
Clarity Grade **VVS 2**
Cut Grade **EXCELLENT**

ADDITIONAL GRADING INFORMATION

Polish **EXCELLENT**
Symmetry **EXCELLENT**
Fluorescence **VERY SLIGHT**
Identification Features **CLOUD**
Inscription(s) **(IGI) 694524274**
Comments: IDEAL CUT ROUND BRILLIANT



Sample Image Used



April 22, 2025
IGI Report Number **694524274**
ROUND BRILLIANT
NATURAL DIAMOND
5.66 - 5.70 X 3.51 MM
Carat Weight **0.70 CARAT**
Color Grade **I**
Clarity Grade **VVS 2**
Cut Grade **EXCELLENT**
Polish **EXCELLENT**
Symmetry **EXCELLENT**
Fluorescence **VERY SLIGHT**
Inscription(s) **(IGI) 694524274**
Comments: IDEAL CUT ROUND BRILLIANT



April 22, 2025
IGI Report Number **694524274**
ROUND BRILLIANT
NATURAL DIAMOND
5.66 - 5.70 X 3.51 MM
Carat Weight **0.70 CARAT**
Color Grade **I**
Clarity Grade **VVS 2**
Cut Grade **EXCELLENT**
Polish **EXCELLENT**
Symmetry **EXCELLENT**
Fluorescence **VERY SLIGHT**
Inscription(s) **(IGI) 694524274**
Comments: IDEAL CUT ROUND BRILLIANT



THIS DOCUMENT WAS PRODUCED WITH THE FOLLOWING SECURITY MEASURES: SPECIAL DOCUMENT PAPER, INK SCREENS, WATERMARK, BACKGROUND DESIGN, HOLOGRAM AND OTHER SECURITY FEATURES NOT LISTED AND DO EXCEED DOCUMENT SECURITY INDUSTRY GUIDELINES.

For terms & conditions and to verify this report, please visit www.igi.org