



# INTERNATIONAL GEMOLOGICAL INSTITUTE

## DIAMOND REPORT

April 22, 2025  
IGI Report Number **694524333**  
Description **NATURAL DIAMOND**  
Shape and Cutting Style **SQUARE EMERALD CUT**  
Measurements **5.18 X 5.12 X 3.56 MM**

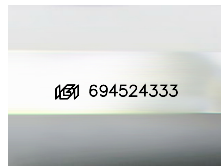
### GRADING RESULTS

Carat Weight **0.90 CARAT**  
Color Grade **I**  
Clarity Grade **INTERNALLY FLAWLESS**  
Cut Grade **VERY GOOD**

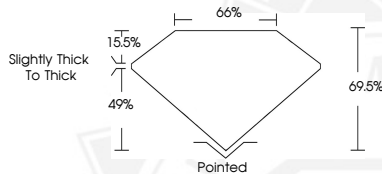
### ADDITIONAL GRADING INFORMATION

Polish **EXCELLENT**  
Symmetry **EXCELLENT**  
Fluorescence **VERY SLIGHT**  
Inscription(s) **IGI 694524333**

ELECTRONIC COPY



Sample Image Used



April 22, 2025  
IGI Report Number **694524333**  
SQUARE EMERALD CUT  
NATURAL DIAMOND  
5.18 X 5.12 X 3.56 MM  
Carat Weight **0.90 CARAT**  
Color Grade **I**  
Clarity Grade **I.F.**  
Cut Grade **VERY GOOD**  
Polish **EXCELLENT**  
Symmetry **EXCELLENT**  
Fluorescence **VERY SLIGHT**  
Inscription(s) **IGI 694524333**



April 22, 2025  
IGI Report Number **694524333**  
SQUARE EMERALD CUT  
NATURAL DIAMOND  
5.18 X 5.12 X 3.56 MM  
Carat Weight **0.90 CARAT**  
Color Grade **I**  
Clarity Grade **I.F.**  
Cut Grade **VERY GOOD**  
Polish **EXCELLENT**  
Symmetry **EXCELLENT**  
Fluorescence **VERY SLIGHT**  
Inscription(s) **IGI 694524333**



THIS DOCUMENT WAS PRODUCED WITH THE FOLLOWING SECURITY MEASURES: SPECIAL DOCUMENT PAPER, INK SCREENS, WATERMARK, BACKGROUND DESIGN, HOLOGRAM AND OTHER SECURITY FEATURES NOT LISTED AND DO EXCEED DOCUMENT SECURITY INDUSTRY GUIDELINES.

For terms & conditions and to verify this report, please visit [www.igi.org](http://www.igi.org)