



INTERNATIONAL GEMOLOGICAL INSTITUTE

DIAMOND REPORT

April 8, 2025
IGI Report Number **694591904**
Description **NATURAL DIAMOND**
Shape and Cutting Style **ROUND BRILLIANT**
Measurements **4.26 - 4.28 X 2.71 MM**

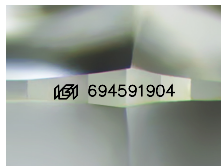
GRADING RESULTS

Carat Weight **0.31 CARAT**
Color Grade **M**
Clarity Grade **VVS 2**
Cut Grade **EXCELLENT**

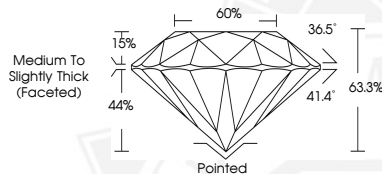
ADDITIONAL GRADING INFORMATION

Polish **EXCELLENT**
Symmetry **EXCELLENT**
Fluorescence **VERY SLIGHT**
Identification Features **CRYSTAL, PINPOINT**
Inscription(s) **IGI 694591904**

ELECTRONIC COPY



Sample Image Used



April 8, 2025
IGI Report Number **694591904**
ROUND BRILLIANT
NATURAL DIAMOND
4.26 - 4.28 X 2.71 MM
Carat Weight **0.31 CARAT**
Color Grade **M**
Clarity Grade **VVS 2**
Cut Grade **EXCELLENT**
Polish **EXCELLENT**
Symmetry **EXCELLENT**
Fluorescence **VERY SLIGHT**
Inscription(s) **IGI 694591904**



April 8, 2025
IGI Report Number **694591904**
ROUND BRILLIANT
NATURAL DIAMOND
4.26 - 4.28 X 2.71 MM
Carat Weight **0.31 CARAT**
Color Grade **M**
Clarity Grade **VVS 2**
Cut Grade **EXCELLENT**
Polish **EXCELLENT**
Symmetry **EXCELLENT**
Fluorescence **VERY SLIGHT**
Inscription(s) **IGI 694591904**



THIS DOCUMENT WAS PRODUCED WITH THE FOLLOWING SECURITY MEASURES: SPECIAL DOCUMENT PAPER, INK SCREENS, WATERMARK, BACKGROUND DESIGNS, HOLOGRAM AND OTHER SECURITY FEATURES NOT LISTED AND DO EXCEED DOCUMENT SECURITY INDUSTRY GUIDELINES.

For terms & conditions and to verify this report, please visit www.igi.org