



INTERNATIONAL GEMOLOGICAL INSTITUTE

DIAMOND REPORT

April 15, 2025
IGI Report Number **694591914**
Description **NATURAL DIAMOND**
Shape and Cutting Style **ROUND BRILLIANT**
Measurements **5.56 - 5.61 X 3.55 MM**

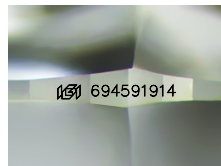
GRADING RESULTS

Carat Weight **0.70 CARAT**
Color Grade **M**
Clarity Grade **VS 2**
Cut Grade **EXCELLENT**

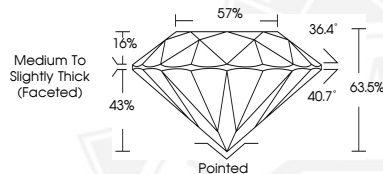
ADDITIONAL GRADING INFORMATION

Polish **EXCELLENT**
Symmetry **EXCELLENT**
Fluorescence **NONE**
Identification Features **CRYSTAL CLOUD**
Inscription(s) **IGI 694591914**

ELECTRONIC COPY



Sample Image Used



April 15, 2025
IGI Report Number **694591914**
ROUND BRILLIANT
NATURAL DIAMOND
5.56 - 5.61 X 3.55 MM
Carat Weight **0.70 CARAT**
Color Grade **M**
Clarity Grade **VS 2**
Cut Grade **EXCELLENT**
Polish **EXCELLENT**
Symmetry **EXCELLENT**
Fluorescence **NONE**
Inscription(s) **IGI 694591914**



April 15, 2025
IGI Report Number **694591914**
ROUND BRILLIANT
NATURAL DIAMOND
5.56 - 5.61 X 3.55 MM
Carat Weight **0.70 CARAT**
Color Grade **M**
Clarity Grade **VS 2**
Cut Grade **EXCELLENT**
Polish **EXCELLENT**
Symmetry **EXCELLENT**
Fluorescence **NONE**
Inscription(s) **IGI 694591914**



THIS DOCUMENT WAS PRODUCED WITH THE FOLLOWING SECURITY MEASURES: SPECIAL DOCUMENT PAPER, INK SCREENS, WATERMARK, BACKGROUND DESIGNS, HOLOGRAM AND OTHER SECURITY FEATURES NOT LISTED AND DO EXCEED DOCUMENT SECURITY INDUSTRY GUIDELINES.

For terms & conditions and to verify this report, please visit www.igi.org