



# INTERNATIONAL GEMOLOGICAL INSTITUTE

## DIAMOND REPORT

April 17, 2025  
IGI Report Number **694592758**  
Description **NATURAL DIAMOND**  
Shape and Cutting Style **ROUND BRILLIANT**  
Measurements **4.70 - 4.72 X 2.94 MM**

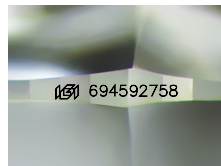
## GRADING RESULTS

Carat Weight **0.40 CARAT**  
Color Grade **I**  
Clarity Grade **VS 2**  
Cut Grade **EXCELLENT**

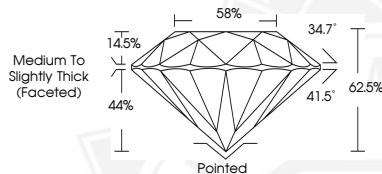
## ADDITIONAL GRADING INFORMATION

Polish **EXCELLENT**  
Symmetry **EXCELLENT**  
Fluorescence **NONE**  
Identification Features **CRYSTAL CLOUD**  
Inscription(s) **(IGI) 694592758**  
Comments: IDEAL CUT ROUND BRILLIANT

ELECTRONIC COPY



Sample Image Used



Medium To  
Slightly Thick  
(Faceted)

Pointed



April 17, 2025  
IGI Report Number **694592758**  
ROUND BRILLIANT  
NATURAL DIAMOND  
4.70 - 4.72 X 2.94 MM  
Carat Weight **0.40 CARAT**  
Color Grade **I**  
Clarity Grade **VS 2**  
Cut Grade **EXCELLENT**  
Polish **EXCELLENT**  
Symmetry **EXCELLENT**  
Fluorescence **NONE**  
Inscription(s) **(IGI) 694592758**  
Comments: IDEAL CUT ROUND  
BRILLIANT



April 17, 2025  
IGI Report Number **694592758**  
ROUND BRILLIANT  
NATURAL DIAMOND  
4.70 - 4.72 X 2.94 MM  
Carat Weight **0.40 CARAT**  
Color Grade **I**  
Clarity Grade **VS 2**  
Cut Grade **EXCELLENT**  
Polish **EXCELLENT**  
Symmetry **EXCELLENT**  
Fluorescence **NONE**  
Inscription(s) **(IGI) 694592758**  
Comments: IDEAL CUT ROUND  
BRILLIANT



THIS DOCUMENT WAS PRODUCED WITH THE FOLLOWING SECURITY MEASURES: SPECIAL DOCUMENT PAPER, INK SCREENS, WATERMARK, BACKGROUND DESIGNS, HOLOGRAM AND OTHER SECURITY FEATURES NOT LISTED AND DO EXCEED DOCUMENT SECURITY INDUSTRY GUIDELINES.

For terms & conditions and to verify this report, please visit [www.igi.org](http://www.igi.org)