



# INTERNATIONAL GEMOLOGICAL INSTITUTE

## DIAMOND REPORT

May 7, 2025  
IGI Report Number **694593173**  
Description **NATURAL DIAMOND**  
Shape and Cutting Style **ROUND BRILLIANT**  
Measurements **4.57 - 4.64 X 2.96 MM**

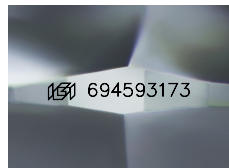
### GRADING RESULTS

Carat Weight **0.40 CARAT**  
Color Grade **J**  
Clarity Grade **VS 1**  
Cut Grade **VERY GOOD**

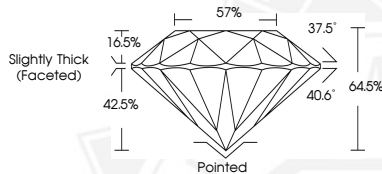
### ADDITIONAL GRADING INFORMATION

Polish **EXCELLENT**  
Symmetry **EXCELLENT**  
Fluorescence **SLIGHT**  
Identification Features **CRYSTAL, FEATHER**  
Inscription(s) **IGI 694593173**

ELECTRONIC COPY



Sample Image Used



May 7, 2025

IGI Report Number **694593173**  
ROUND BRILLIANT  
NATURAL DIAMOND  
4.57 - 4.64 X 2.96 MM  
Carat Weight **0.40 CARAT**  
Color Grade **J**  
Clarity Grade **VS 1**  
Cut Grade **VERY GOOD**  
Polish **EXCELLENT**  
Symmetry **EXCELLENT**  
Fluorescence **SLIGHT**  
Inscription(s) **IGI 694593173**



May 7, 2025

IGI Report Number **694593173**  
ROUND BRILLIANT  
NATURAL DIAMOND  
4.57 - 4.64 X 2.96 MM  
Carat Weight **0.40 CARAT**  
Color Grade **J**  
Clarity Grade **VS 1**  
Cut Grade **VERY GOOD**  
Polish **EXCELLENT**  
Symmetry **EXCELLENT**  
Fluorescence **SLIGHT**  
Inscription(s) **IGI 694593173**



THIS DOCUMENT WAS PRODUCED WITH THE FOLLOWING SECURITY MEASURES: SPECIAL DOCUMENT PAPER, INK SCREENS, WATERMARK, BACKGROUND DESIGNS, HOLOGRAM AND OTHER SECURITY FEATURES NOT LISTED AND DO EXCEED DOCUMENT SECURITY INDUSTRY GUIDELINES.

For terms & conditions and to verify this report, please visit [www.igi.org](http://www.igi.org)