



# INTERNATIONAL GEMOLOGICAL INSTITUTE

ELECTRONIC COPY

## DIAMOND REPORT

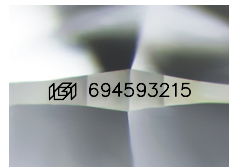
May 8, 2025  
IGI Report Number **694593215**  
Description **NATURAL DIAMOND**  
Shape and Cutting Style **ROUND BRILLIANT**  
Measurements **4.37 - 4.40 X 2.73 MM**

### GRADING RESULTS

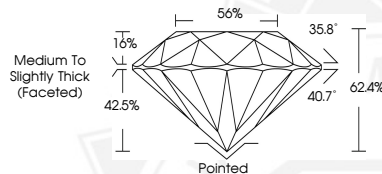
Carat Weight **0.32 CARAT**  
Color Grade **J**  
Clarity Grade **VVS 2**  
Cut Grade **EXCELLENT**

### ADDITIONAL GRADING INFORMATION

Polish **EXCELLENT**  
Symmetry **EXCELLENT**  
Fluorescence **NONE**  
Identification Features **POINT, CLOUD**  
Inscription(s) **IGI 694593215**  
Comments: IDEAL CUT ROUND BRILLIANT



Sample Image Used



May 8, 2025

IGI Report Number **694593215**

**ROUND BRILLIANT**

**NATURAL DIAMOND**

**4.37 - 4.40 X 2.73 MM**

Carat Weight **0.32 CARAT**

Color Grade **J**

Clarity Grade **VVS 2**

Cut Grade **EXCELLENT**

Polish **EXCELLENT**

Symmetry **EXCELLENT**

Fluorescence **NONE**

Inscription(s) **IGI 694593215**

Comments: IDEAL CUT ROUND

BRILLIANT



May 8, 2025

IGI Report Number **694593215**

**ROUND BRILLIANT**

**NATURAL DIAMOND**

**4.37 - 4.40 X 2.73 MM**

Carat Weight **0.32 CARAT**

Color Grade **J**

Clarity Grade **VVS 2**

Cut Grade **EXCELLENT**

Polish **EXCELLENT**

Symmetry **EXCELLENT**

Fluorescence **NONE**

Inscription(s) **IGI 694593215**

Comments: IDEAL CUT ROUND

BRILLIANT



THIS DOCUMENT WAS PRODUCED WITH THE FOLLOWING SECURITY MEASURES: SPECIAL DOCUMENT PAPER, INK SCREENS, WATERMARK, BACKGROUND DESIGNS, HOLOGRAM AND OTHER SECURITY FEATURES NOT LISTED AND DO EXCEED DOCUMENT SECURITY INDUSTRY GUIDELINES.

For terms & conditions and to verify this report, please visit [www.igi.org](http://www.igi.org)