



INTERNATIONAL GEMOLOGICAL INSTITUTE

DIAMOND REPORT

May 13, 2025
IGI Report Number **694594258**
Description **NATURAL DIAMOND**
Shape and Cutting Style **ROUND BRILLIANT**
Measurements **4.71 - 4.74 X 2.94 MM**

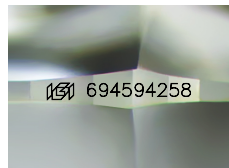
GRADING RESULTS

Carat Weight **0.40 CARAT**
Color Grade **I**
Clarity Grade **VVS 2**
Cut Grade **EXCELLENT**

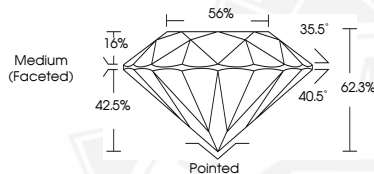
ADDITIONAL GRADING INFORMATION

Polish **EXCELLENT**
Symmetry **EXCELLENT**
Fluorescence **VERY SLIGHT**
Identification Features **FEATHER, PINPOINT**
Inscription(s) **(IGI) 694594258**
Comments: IDEAL CUT ROUND BRILLIANT

ELECTRONIC COPY



Sample Image Used



May 13, 2025
IGI Report Number **694594258**
ROUND BRILLIANT
NATURAL DIAMOND
4.71 - 4.74 X 2.94 MM
Carat Weight **0.40 CARAT**
Color Grade **I**
Clarity Grade **VVS 2**
Cut Grade **EXCELLENT**
Polish **EXCELLENT**
Symmetry **EXCELLENT**
Fluorescence **VERY SLIGHT**
Inscription(s) **(IGI) 694594258**
Comments: IDEAL CUT ROUND BRILLIANT



May 13, 2025
IGI Report Number **694594258**
ROUND BRILLIANT
NATURAL DIAMOND
4.71 - 4.74 X 2.94 MM
Carat Weight **0.40 CARAT**
Color Grade **I**
Clarity Grade **VVS 2**
Cut Grade **EXCELLENT**
Polish **EXCELLENT**
Symmetry **EXCELLENT**
Fluorescence **VERY SLIGHT**
Inscription(s) **(IGI) 694594258**
Comments: IDEAL CUT ROUND BRILLIANT



THIS DOCUMENT WAS PRODUCED WITH THE FOLLOWING SECURITY MEASURES: SPECIAL DOCUMENT PAPER, INK SCREENS, WATERMARK, BACKGROUND DESIGN, HOLOGRAM AND OTHER SECURITY FEATURES NOT LISTED AND DO EXCEED DOCUMENT SECURITY INDUSTRY GUIDELINES.

For terms & conditions and to verify this report, please visit www.igi.org