



INTERNATIONAL GEMOLOGICAL INSTITUTE

DIAMOND REPORT

May 13, 2025
IGI Report Number **694594259**
Description **NATURAL DIAMOND**
Shape and Cutting Style **ROUND BRILLIANT**
Measurements **5.40 - 5.43 X 3.35 MM**

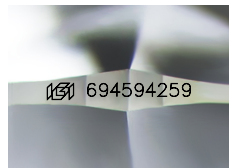
GRADING RESULTS

Carat Weight **0.60 CARAT**
Color Grade **I**
Clarity Grade **VS 1**
Cut Grade **EXCELLENT**

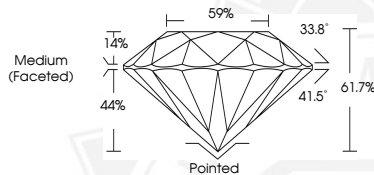
ADDITIONAL GRADING INFORMATION

Polish **EXCELLENT**
Symmetry **EXCELLENT**
Fluorescence **VERY SLIGHT**
Identification Features **CRYSTAL**
Inscription(s) **(IGI) 694594259**
Comments: IDEAL CUT ROUND BRILLIANT

ELECTRONIC COPY



Sample Image Used



May 13, 2025
IGI Report Number **694594259**
ROUND BRILLIANT
NATURAL DIAMOND
5.40 - 5.43 X 3.35 MM
Carat Weight **0.60 CARAT**
Color Grade **I**
Clarity Grade **VS 1**
Cut Grade **EXCELLENT**
Polish **EXCELLENT**
Symmetry **EXCELLENT**
Fluorescence **VERY SLIGHT**
Inscription(s) **(IGI) 694594259**
Comments: IDEAL CUT ROUND
BRILLIANT



May 13, 2025
IGI Report Number **694594259**
ROUND BRILLIANT
NATURAL DIAMOND
5.40 - 5.43 X 3.35 MM
Carat Weight **0.60 CARAT**
Color Grade **I**
Clarity Grade **VS 1**
Cut Grade **EXCELLENT**
Polish **EXCELLENT**
Symmetry **EXCELLENT**
Fluorescence **VERY SLIGHT**
Inscription(s) **(IGI) 694594259**
Comments: IDEAL CUT ROUND
BRILLIANT



THIS DOCUMENT WAS PRODUCED WITH THE FOLLOWING SECURITY MEASURES: SPECIAL DOCUMENT PAPER, INK SCREENS, WATERMARK, BACKGROUND DESIGNS, HOLOGRAM AND OTHER SECURITY FEATURES NOT LISTED AND DO EXCEED DOCUMENT SECURITY INDUSTRY GUIDELINES.

For terms & conditions and to verify this report, please visit www.igi.org