



INTERNATIONAL GEMOLOGICAL INSTITUTE

ELECTRONIC COPY

DIAMOND REPORT

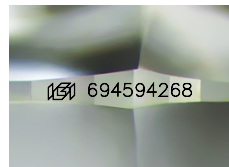
May 13, 2025
IGI Report Number **694594268**
Description **NATURAL DIAMOND**
Shape and Cutting Style **ROUND BRILLIANT**
Measurements **4.69 - 4.72 X 2.94 MM**

GRADING RESULTS

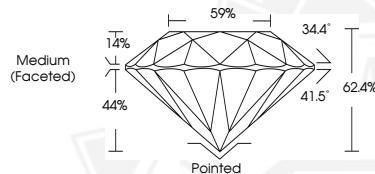
Carat Weight **0.40 CARAT**
Color Grade **I**
Clarity Grade **VVS 1**
Cut Grade **EXCELLENT**

ADDITIONAL GRADING INFORMATION

Polish **EXCELLENT**
Symmetry **EXCELLENT**
Fluorescence **VERY SLIGHT**
Identification Features **NEEDLE**
Inscription(s) **(IGI) 694594268**
Comments: IDEAL CUT ROUND BRILLIANT



Sample Image Used



May 13, 2025
IGI Report Number **694594268**
ROUND BRILLIANT
NATURAL DIAMOND
4.69 - 4.72 X 2.94 MM
Carat Weight **0.40 CARAT**
Color Grade **I**
Clarity Grade **VVS 1**
Cut Grade **EXCELLENT**
Polish **EXCELLENT**
Symmetry **EXCELLENT**
Fluorescence **VERY SLIGHT**
Inscription(s) **(IGI) 694594268**
Comments: IDEAL CUT ROUND BRILLIANT



May 13, 2025
IGI Report Number **694594268**
ROUND BRILLIANT
NATURAL DIAMOND
4.69 - 4.72 X 2.94 MM
Carat Weight **0.40 CARAT**
Color Grade **I**
Clarity Grade **VVS 1**
Cut Grade **EXCELLENT**
Polish **EXCELLENT**
Symmetry **EXCELLENT**
Fluorescence **VERY SLIGHT**
Inscription(s) **(IGI) 694594268**
Comments: IDEAL CUT ROUND BRILLIANT



THIS DOCUMENT WAS PRODUCED WITH THE FOLLOWING SECURITY MEASURES: SPECIAL DOCUMENT PAPER, INK SCREENS, WATERMARK, BACKGROUND DESIGNS, HOLOGRAM AND OTHER SECURITY FEATURES NOT LISTED AND DO EXCEED DOCUMENT SECURITY INDUSTRY GUIDELINES.

For terms & conditions and to verify this report, please visit www.igi.org