



INTERNATIONAL GEMOLOGICAL INSTITUTE

DIAMOND REPORT

May 12, 2025
IGI Report Number **694594279**
Description **NATURAL DIAMOND**
Shape and Cutting Style **ROUND BRILLIANT**
Measurements **5.21 - 5.24 X 3.27 MM**

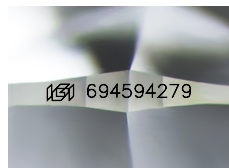
GRADING RESULTS

Carat Weight **0.55 CARAT**
Color Grade **J**
Clarity Grade **VVS 1**
Cut Grade **EXCELLENT**

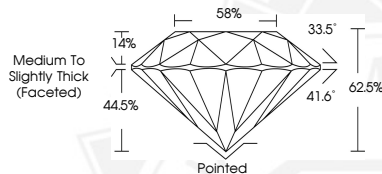
ADDITIONAL GRADING INFORMATION

Polish **EXCELLENT**
Symmetry **EXCELLENT**
Fluorescence **VERY SLIGHT**
Identification Features **CLOUD**
Inscription(s) **(G) 694594279**

ELECTRONIC COPY



Sample Image Used



May 12, 2025
IGI Report Number **694594279**
ROUND BRILLIANT
NATURAL DIAMOND
5.21 - 5.24 X 3.27 MM
Carat Weight **0.55 CARAT**
Color Grade **J**
Clarity Grade **VVS 1**
Cut Grade **EXCELLENT**
Polish **EXCELLENT**
Symmetry **EXCELLENT**
Fluorescence **VERY SLIGHT**
Inscription(s) **(G) 694594279**



May 12, 2025
IGI Report Number **694594279**
ROUND BRILLIANT
NATURAL DIAMOND
5.21 - 5.24 X 3.27 MM
Carat Weight **0.55 CARAT**
Color Grade **J**
Clarity Grade **VVS 1**
Cut Grade **EXCELLENT**
Polish **EXCELLENT**
Symmetry **EXCELLENT**
Fluorescence **VERY SLIGHT**
Inscription(s) **(G) 694594279**



THIS DOCUMENT WAS PRODUCED WITH THE FOLLOWING SECURITY MEASURES: SPECIAL DOCUMENT PAPER, INK SCREENS, WATERMARK, BACKGROUND DESIGNS, HOLOGRAM AND OTHER SECURITY FEATURES NOT LISTED AND DO EXCEED DOCUMENT SECURITY INDUSTRY GUIDELINES.

For terms & conditions and to verify this report, please visit www.igi.org