



# INTERNATIONAL GEMOLOGICAL INSTITUTE

ELECTRONIC COPY

## DIAMOND REPORT

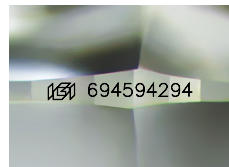
May 12, 2025  
IGI Report Number **694594294**  
Description **NATURAL DIAMOND**  
Shape and Cutting Style **ROUND BRILLIANT**  
Measurements **4.80 - 4.83 X 3.01 MM**

### GRADING RESULTS

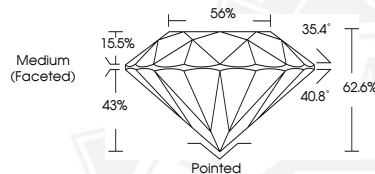
Carat Weight **0.43 CARAT**  
Color Grade **J**  
Clarity Grade **VVS 1**  
Cut Grade **EXCELLENT**

### ADDITIONAL GRADING INFORMATION

Polish **EXCELLENT**  
Symmetry **EXCELLENT**  
Fluorescence **SLIGHT**  
Identification Features **PINPOINT, FEATHER**  
Inscription(s) **IGI 694594294**



Sample Image Used



May 12, 2025  
IGI Report Number **694594294**  
ROUND BRILLIANT  
NATURAL DIAMOND  
4.80 - 4.83 X 3.01 MM  
Carat Weight **0.43 CARAT**  
Color Grade **J**  
Clarity Grade **VVS 1**  
Cut Grade **EXCELLENT**  
Polish **EXCELLENT**  
Symmetry **EXCELLENT**  
Fluorescence **SLIGHT**  
Inscription(s) **IGI 694594294**



May 12, 2025  
IGI Report Number **694594294**  
ROUND BRILLIANT  
NATURAL DIAMOND  
4.80 - 4.83 X 3.01 MM  
Carat Weight **0.43 CARAT**  
Color Grade **J**  
Clarity Grade **VVS 1**  
Cut Grade **EXCELLENT**  
Polish **EXCELLENT**  
Symmetry **EXCELLENT**  
Fluorescence **SLIGHT**  
Inscription(s) **IGI 694594294**



THIS DOCUMENT WAS PRODUCED WITH THE FOLLOWING SECURITY MEASURES: SPECIAL DOCUMENT PAPER, INK SCREENS, WATERMARK, BACKGROUND DESIGN, HOLOGRAM AND OTHER SECURITY FEATURES NOT LISTED AND DO EXCEED DOCUMENT SECURITY INDUSTRY GUIDELINES.

For terms & conditions and to verify this report, please visit [www.igi.org](http://www.igi.org)