



# INTERNATIONAL GEMOLOGICAL INSTITUTE

## DIAMOND REPORT

May 26, 2025  
IGI Report Number **694594547**  
Description **NATURAL DIAMOND**  
Shape and Cutting Style **ROUND BRILLIANT**  
Measurements **5.13 - 5.17 X 3.07 MM**

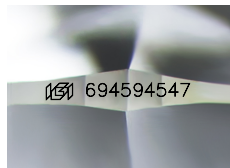
### GRADING RESULTS

Carat Weight **0.50 CARAT**  
Color Grade **F**  
Clarity Grade **VS 2**  
Cut Grade **EXCELLENT**

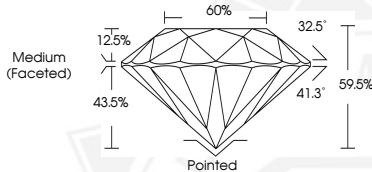
### ADDITIONAL GRADING INFORMATION

Polish **EXCELLENT**  
Symmetry **EXCELLENT**  
Fluorescence **NONE**  
Identification Features **CRYSTAL, CLOUD, FEATHER**  
Inscription(s) **IGI 694594547**

ELECTRONIC COPY



Sample Image Used



May 26, 2025  
IGI Report Number **694594547**  
ROUND BRILLIANT  
NATURAL DIAMOND  
5.13 - 5.17 X 3.07 MM  
Carat Weight **0.50 CARAT**  
Color Grade **F**  
Clarity Grade **VS 2**  
Cut Grade **EXCELLENT**  
Polish **EXCELLENT**  
Symmetry **EXCELLENT**  
Fluorescence **NONE**  
Inscription(s) **IGI 694594547**



May 26, 2025  
IGI Report Number **694594547**  
ROUND BRILLIANT  
NATURAL DIAMOND  
5.13 - 5.17 X 3.07 MM  
Carat Weight **0.50 CARAT**  
Color Grade **F**  
Clarity Grade **VS 2**  
Cut Grade **EXCELLENT**  
Polish **EXCELLENT**  
Symmetry **EXCELLENT**  
Fluorescence **NONE**  
Inscription(s) **IGI 694594547**



THIS DOCUMENT WAS PRODUCED WITH THE FOLLOWING SECURITY MEASURES: SPECIAL DOCUMENT PAPER, INK SCREENS, WATERMARK, BACKGROUND DESIGN, HOLOGRAM AND OTHER SECURITY FEATURES NOT LISTED AND DO EXCEED DOCUMENT SECURITY INDUSTRY GUIDELINES.

For terms & conditions and to verify this report, please visit [www.igi.org](http://www.igi.org)