



# INTERNATIONAL GEMOLOGICAL INSTITUTE

## DIAMOND REPORT

May 30, 2025  
IGI Report Number **694594651**  
Description **NATURAL DIAMOND**  
Shape and Cutting Style **ROUND BRILLIANT**  
Measurements **5.60 - 5.63 X 3.55 MM**

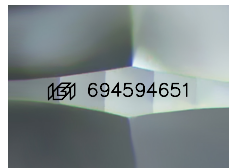
### GRADING RESULTS

Carat Weight **0.70 CARAT**  
Color Grade **H**  
Clarity Grade **VVS 2**  
Cut Grade **EXCELLENT**

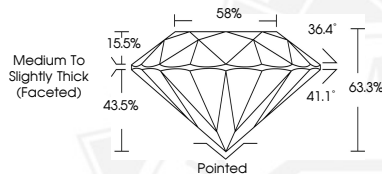
### ADDITIONAL GRADING INFORMATION

Polish **EXCELLENT**  
Symmetry **EXCELLENT**  
Fluorescence **VERY SLIGHT**  
Identification Features **CRYSTAL**  
Inscription(s) **IGI 694594651**

ELECTRONIC COPY



Sample Image Used



May 30, 2025  
IGI Report Number **694594651**  
ROUND BRILLIANT  
NATURAL DIAMOND  
5.60 - 5.63 X 3.55 MM  
Carat Weight **0.70 CARAT**  
Color Grade **H**  
Clarity Grade **VVS 2**  
Cut Grade **EXCELLENT**  
Polish **EXCELLENT**  
Symmetry **EXCELLENT**  
Fluorescence **VERY SLIGHT**  
Inscription(s) **IGI 694594651**



May 30, 2025  
IGI Report Number **694594651**  
ROUND BRILLIANT  
NATURAL DIAMOND  
5.60 - 5.63 X 3.55 MM  
Carat Weight **0.70 CARAT**  
Color Grade **H**  
Clarity Grade **VVS 2**  
Cut Grade **EXCELLENT**  
Polish **EXCELLENT**  
Symmetry **EXCELLENT**  
Fluorescence **VERY SLIGHT**  
Inscription(s) **IGI 694594651**



THIS DOCUMENT WAS PRODUCED WITH THE FOLLOWING SECURITY MEASURES: SPECIAL DOCUMENT PAPER, INK SCREENS, WATERMARK, BACKGROUND DESIGNS, HOLOGRAM AND OTHER SECURITY FEATURES NOT LISTED AND DO EXCEED DOCUMENT SECURITY INDUSTRY GUIDELINES.

For terms & conditions and to verify this report, please visit [www.igi.org](http://www.igi.org)